

## Product datasheet for **TA332926**

### SERPINA6 Rabbit Polyclonal Antibody

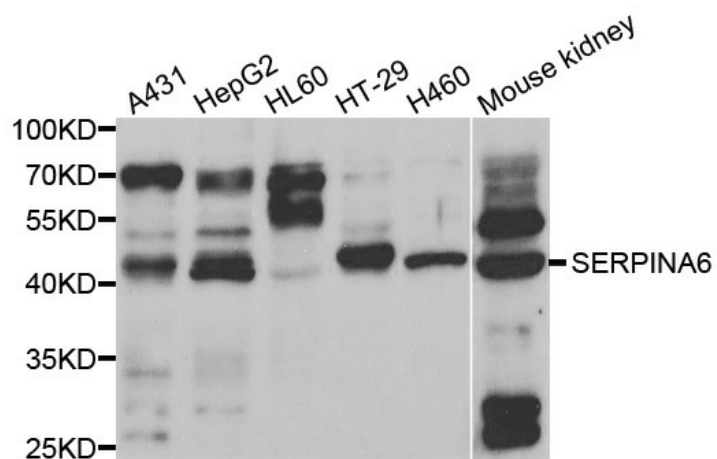
#### Product data:

Product Type:	Primary Antibodies
Applications:	WB
Recommended Dilution:	WB 1:500 - 1:2000
Reactivity:	Human
Host:	Rabbit
Isotype:	IgG
Clonality:	Polyclonal
Immunogen:	Recombinant protein of human SERPINA6
Formulation:	Store at -20°C (regular) and -80°C (long term). Avoid freeze / thaw cycles. Buffer: PBS with 0.02% sodium azide, 50% glycerol, pH7.3.
Concentration:	lot specific
Purification:	Affinity purification
Conjugation:	Unconjugated
Storage:	Store at -20°C as received.
Stability:	Stable for 12 months from date of receipt.
Predicted Protein Size:	405
Gene Name:	serpin family A member 6
Database Link:	<a href="#">NP_001747</a> <a href="#">Entrez Gene 866 Human</a> <a href="#">P08185</a>
Background:	This gene encodes an alpha-globulin protein with corticosteroid-binding properties. This is the major transport protein for glucocorticoids and progestins in the blood of most vertebrates. The gene localizes to a chromosomal region containing several closely related serine protease inhibitors which may have evolved by duplication events.
Synonyms:	CBG
Protein Families:	Druggable Genome, Secreted Protein



[View online »](#)

## Product images:



Western blot analysis of extracts of various cell lines, using SERPINA6 antibody.