

Product datasheet for **TA332925S**

GRO alpha (CXCL1) Rabbit Polyclonal Antibody

Product data:

Product Type:	Primary Antibodies
Applications:	ELISA, ICC/IF, WB
Recommended Dilution:	WB, 1:500 - 1:1000 IF/ICC, 1:50 - 1:200 ELISA, Recommended starting concentration is 1 µg/mL. Please optimize the concentration based on your specific assay requirements.
Reactivity:	Human, Rat
Host:	Rabbit
Isotype:	IgG
Clonality:	Polyclonal
Formulation:	Store at -20°C (regular) and -80°C (long term). Avoid freeze / thaw cycles. Buffer: PBS with 0.02% sodium azide, 50% glycerol, pH7.3.
Concentration:	lot specific
Purification:	Affinity purification
Conjugation:	Unconjugated
Storage:	Store at -20°C. Avoid freeze / thaw cycles.
Stability:	Stable for 12 months from date of receipt.
Predicted Protein Size:	11kDa
Gene Name:	C-X-C motif chemokine ligand 1
Database Link:	NP_001502 Entrez Gene 81503 Rat Entrez Gene 2919 Human P09341

[View online »](#)

Background:

This antimicrobial gene encodes a member of the CXC subfamily of chemokines. The encoded protein is a secreted growth factor that signals through the G-protein coupled receptor, CXC receptor 2. This protein plays a role in inflammation and as a chemoattractant for neutrophils. Aberrant expression of this protein is associated with the growth and progression of certain tumors. A naturally occurring processed form of this protein has increased chemotactic activity. Alternate splicing results in coding and non-coding variants of this gene. A pseudogene of this gene is found on chromosome 4.

Synonyms:

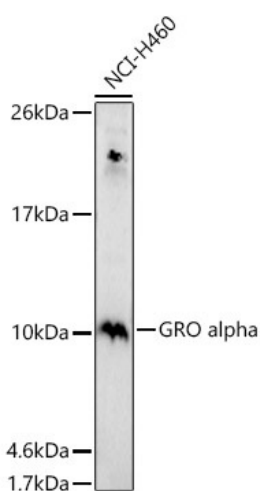
FSP; GRO1; GROa; MGSA; MGSA-a; NAP-3; SCYB1

Protein Families:

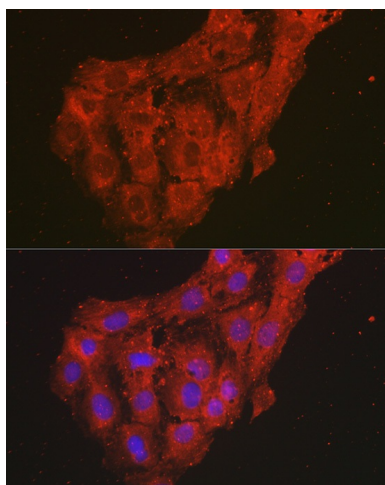
Druggable Genome, Secreted Protein

Protein Pathways:

Chemokine signaling pathway, Cytokine-cytokine receptor interaction, Epithelial cell signaling in *Helicobacter pylori* infection, NOD-like receptor signaling pathway

Product images:


Western blot analysis of lysates from NCI-H460 cells



Immunofluorescence analysis of C6 cells using GRO alpha Rabbit pAb ([TA332925]) at dilution of 1:100 (40x lens). Secondary antibody: Cy3-conjugated Goat anti-Rabbit IgG (H+L) (AS007) at 1:500 dilution. Blue: DAPI for nuclear staining.