

## Product datasheet for **TA332925**

### GRO alpha (CXCL1) Rabbit Polyclonal Antibody

#### Product data:

Product Type:	Primary Antibodies
Applications:	ICC/IF, WB
Recommended Dilution:	WB 1:500 - 1:2000
Reactivity:	Human, Rat
Host:	Rabbit
Isotype:	IgG
Clonality:	Polyclonal
Immunogen:	Recombinant protein of human CXCL1
Formulation:	Store at -20°C (regular) and -80°C (long term). Avoid freeze / thaw cycles. Buffer: PBS with 0.02% sodium azide, 50% glycerol, pH7.3.
Concentration:	lot specific
Purification:	Affinity purification
Conjugation:	Unconjugated
Storage:	Store at -20°C as received.
Stability:	Stable for 12 months from date of receipt.
Predicted Protein Size:	107
Gene Name:	C-X-C motif chemokine ligand 1
Database Link:	<a href="#">NP_001502</a> <a href="#">Entrez Gene 81503 Rat</a> <a href="#">Entrez Gene 2919 Human</a> <a href="#">P09341</a>
Background:	This gene encodes a member of the CXC subfamily of chemokines. The encoded protein is a secreted growth factor that signal through the G-protein coupled receptor, CXC receptor 2. This protein plays a role in inflammation and as a chemoattractant for neutrophils. Aberrant expression this protein is associated with the growth and progression of certain tumors. A naturally occurring processed form of this protein has increased chemotactic activity. Alternate splicing results in coding and non-coding variants of this gene. A pseudogene of this gene is found on chromosome 4.
Synonyms:	FSP; GRO1; GROa; MGSA; MGSA-a; NAP-3; SCYB1

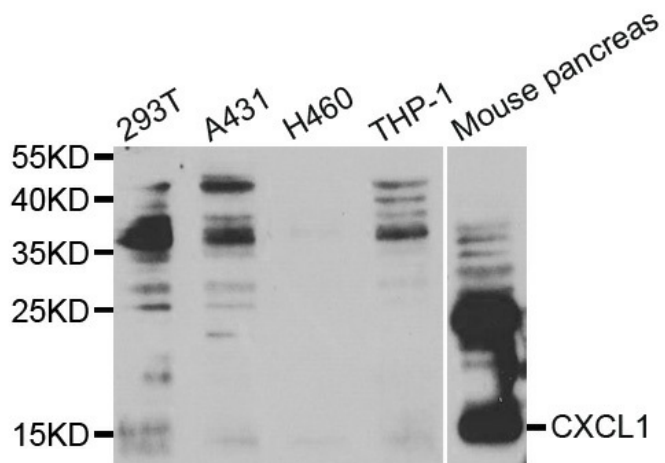


[View online »](#)

**Protein Families:** Druggable Genome, Secreted Protein

**Protein Pathways:** Chemokine signaling pathway, Cytokine-cytokine receptor interaction, Epithelial cell signaling in Helicobacter pylori infection, NOD-like receptor signaling pathway

**Product images:**



Western blot analysis of extracts of various cell lines, using CXCL1 antibody.