

Product datasheet for **TA332924**

Septin 2 (SEPT2) Rabbit Polyclonal Antibody

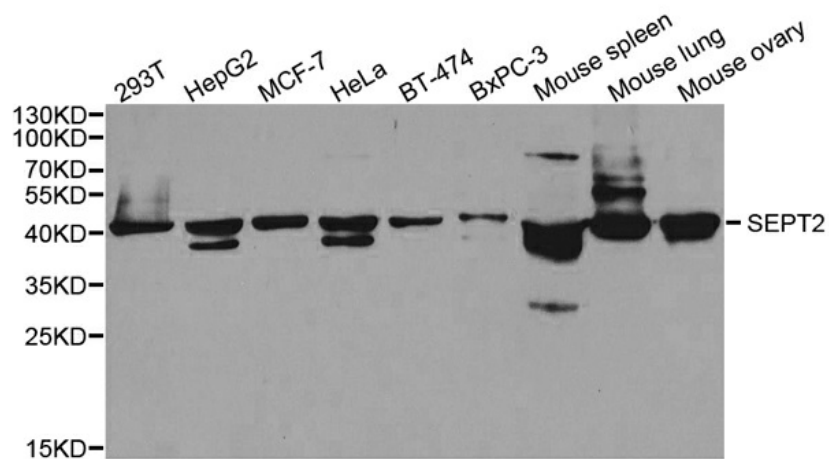
Product data:

Product Type:	Primary Antibodies
Applications:	ICC/IF, WB
Recommended Dilution:	WB 1:500 - 1:2000
Reactivity:	Human, Mouse
Host:	Rabbit
Isotype:	IgG
Clonality:	Polyclonal
Immunogen:	Recombinant protein of human SEPT2
Formulation:	Store at -20°C (regular) and -80°C (long term). Avoid freeze / thaw cycles. Buffer: PBS with 0.02% sodium azide, 50% glycerol, pH7.3.
Concentration:	lot specific
Purification:	Affinity purification
Conjugation:	Unconjugated
Storage:	Store at -20°C as received.
Stability:	Stable for 12 months from date of receipt.
Predicted Protein Size:	361
Gene Name:	septin 2
Database Link:	NP_001008491 Entrez Gene 18000 Mouse Entrez Gene 4735 Human Q15019
Synonyms:	DIFF6; hNedd5; NEDD-5; NEDD5; Pnutl3



[View online »](#)

Product images:



Western blot analysis of extracts of various cell lines, using SEPT2 antibody.