

## Product datasheet for **TA332923**

### SATB1 Rabbit Polyclonal Antibody

#### Product data:

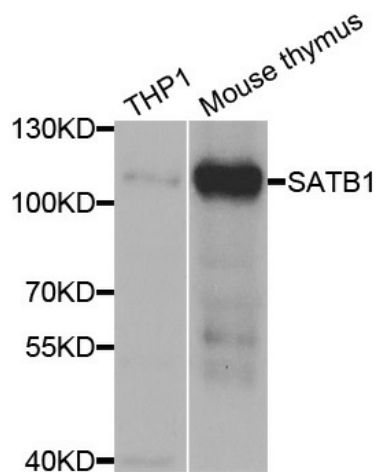
Product Type:	Primary Antibodies
Applications:	ICC/IF, IHC, IP, WB
Recommended Dilution:	WB 1:500 - 1:2000;IF 1:50- 1:200
Reactivity:	Human, Mouse, Rat
Host:	Rabbit
Isotype:	IgG
Clonality:	Polyclonal
Immunogen:	Recombinant protein of human SATB1
Formulation:	Store at -20°C (regular) and -80°C (long term). Avoid freeze / thaw cycles. Buffer: PBS with 0.02% sodium azide, 50% glycerol, pH7.3.
Concentration:	lot specific
Purification:	Affinity purification
Conjugation:	Unconjugated
Storage:	Store at -20°C as received.
Stability:	Stable for 12 months from date of receipt.
Predicted Protein Size:	763
Gene Name:	SATB homeobox 1
Database Link:	<a href="#">NP_002962</a> <a href="#">Entrez Gene 20230 MouseEntrez Gene 316164 RatEntrez Gene 6304 Human Q01826</a>
Background:	This gene encodes a matrix protein which binds nuclear matrix and scaffold-associating DNAs through a unique nuclear architecture. The protein recruits chromatin-remodeling factors in order to regulate chromatin structure and gene expression. Multiple transcript variants encoding different isoforms have been found for this gene.
Synonyms:	DNA-binding protein SATB1; SATB homeobox 1; scaffold-associating DNA's); special AT-rich sequence binding protein 1; special AT-rich sequence binding protein 1 (binds to nuclear matrix



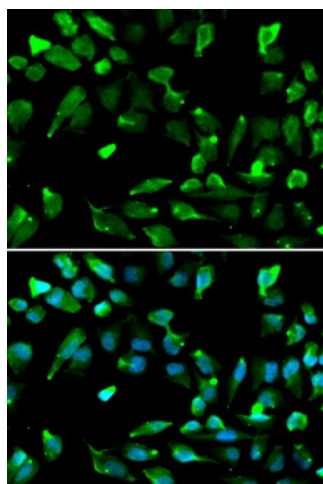
[View online »](#)

Protein Families: Druggable Genome, Transcription Factors

### Product images:



Western blot analysis of extracts of various cell lines, using SATB1 antibody.



Immunofluorescence analysis of A549 cell using SATB1 antibody. Blue: DAPI for nuclear staining.