

## Product datasheet for TA332917S

### CD36 Rabbit Polyclonal Antibody

#### Product data:

Product Type:	Primary Antibodies
Applications:	ELISA, ICC/IF, IHC, WB
Recommended Dilution:	WB, 1:1000 - 1:5000 IHC-P, 1:100 - 1:500 IF/ICC, 1:50 - 1:200 ELISA, Recommended starting concentration is 1 µg/mL. Please optimize the concentration based on your specific assay requirements.
Reactivity:	Human, Mouse, Rat
Host:	Rabbit
Isotype:	IgG
Clonality:	Polyclonal
Formulation:	Store at -20°C (regular) and -80°C (long term). Avoid freeze / thaw cycles. Buffer: PBS with 0.02% sodium azide, 50% glycerol, pH7.3.
Concentration:	lot specific
Purification:	Affinity purification
Conjugation:	Unconjugated
Storage:	Store at -20°C. Avoid freeze / thaw cycles.
Stability:	Stable for 12 months from date of receipt.
Predicted Protein Size:	53kDa
Gene Name:	CD36 molecule
Database Link:	<a href="#">NP_000063</a> <a href="#">Entrez Gene 12491 Mouse</a> <a href="#">Entrez Gene 29184 Rat</a> <a href="#">Entrez Gene 948 Human</a> <a href="#">P16671</a>


[View online »](#)

**Background:**

The protein encoded by this gene is the fourth major glycoprotein of the platelet surface and serves as a receptor for thrombospondin in platelets and various cell lines. Since thrombospondins are widely distributed proteins involved in a variety of adhesive processes, this protein may have important functions as a cell adhesion molecule. It binds to collagen, thrombospondin, anionic phospholipids and oxidized LDL. It directly mediates cytoadherence of *Plasmodium falciparum* parasitized erythrocytes and it binds long chain fatty acids and may function in the transport and/or as a regulator of fatty acid transport. Mutations in this gene cause platelet glycoprotein deficiency. Multiple alternatively spliced transcript variants have been found for this gene.

**Synonyms:**

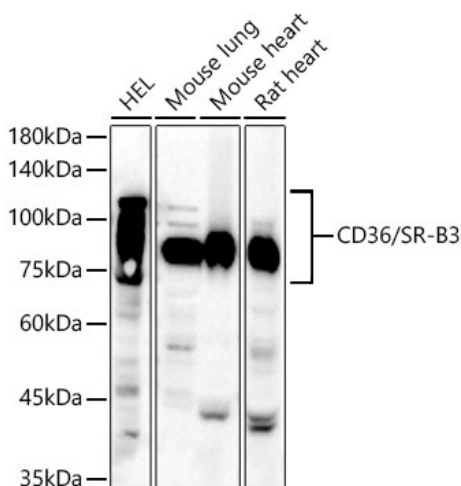
BDPLT10; CHDS7; FAT; GP3B; GP4; GPIV; PASIV; SCARB3

**Protein Families:**

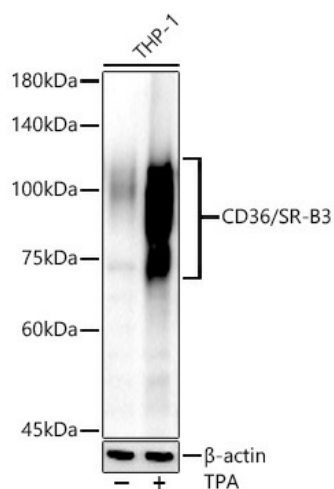
Druggable Genome, Transmembrane

**Protein Pathways:**

Adipocytokine signaling pathway, ECM-receptor interaction, Hematopoietic cell lineage, PPAR signaling pathway

**Product images:**


Western blot analysis of various lysates



Western blot analysis of various lysates using CD36/SR-B3 Rabbit pAb ([TA332917]) at 1:2000 dilution.

Secondary antibody: HRP-conjugated Goat anti-Rabbit IgG (H+L) (AS014) at 1:10000 dilution.

Lysates / proteins: 25 µg per lane.

Blocking buffer: 3 % nonfat dry milk in TBST.

Detection: ECL Basic Kit (RM00020).

Exposure time: 60s.