

## Product datasheet for **TA332913**

### TOPBP1 Rabbit Polyclonal Antibody

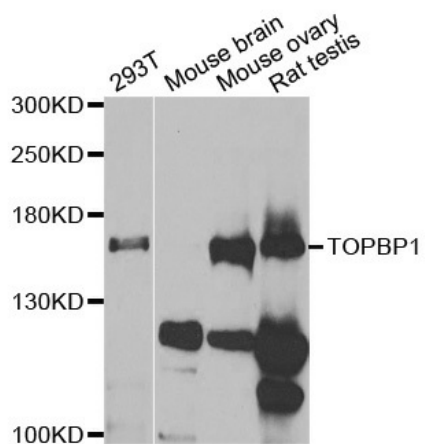
#### Product data:

Product Type:	Primary Antibodies
Applications:	IHC, WB
Recommended Dilution:	WB 1:500 - 1:2000
Reactivity:	Human, Mouse, Rat
Host:	Rabbit
Isotype:	IgG
Clonality:	Polyclonal
Immunogen:	Recombinant protein of human TOPBP1
Formulation:	Store at -20°C (regular) and -80°C (long term). Avoid freeze / thaw cycles. Buffer: PBS with 0.02% sodium azide, 50% glycerol, pH7.3.
Concentration:	lot specific
Purification:	Affinity purification
Conjugation:	Unconjugated
Storage:	Store at -20°C as received.
Stability:	Stable for 12 months from date of receipt.
Predicted Protein Size:	1522
Gene Name:	topoisomerase (DNA) II binding protein 1
Database Link:	<a href="#">NP_008958</a> <a href="#">Entrez Gene 235559</a> <a href="#">MouseEntrez Gene 315969</a> <a href="#">RatEntrez Gene 11073</a> <a href="#">Human Q92547</a>
Background:	This gene encodes a binding protein which interacts with the C-terminal region of topoisomerase II beta. This interaction suggests a supportive role for this protein in the catalytic reactions of topoisomerase II beta through transient breakages of DNA strands.
Synonyms:	TOP2BP1



[View online »](#)

## Product images:



Western blot analysis of extracts of various cell lines, using TOPBP1 antibody.