

Product datasheet for **TA332911**

P2Y2 (P2RY2) Rabbit Polyclonal Antibody

Product data:

Product Type:	Primary Antibodies
Applications:	WB
Recommended Dilution:	WB 1:500 - 1:2000
Reactivity:	Mouse, Human
Host:	Rabbit
Isotype:	IgG
Clonality:	Polyclonal
Immunogen:	Recombinant protein of human P2RY2
Formulation:	Store at -20°C (regular) and -80°C (long term). Avoid freeze / thaw cycles. Buffer: PBS with 0.02% sodium azide, 50% glycerol, pH7.3.
Concentration:	lot specific
Purification:	Affinity purification
Conjugation:	Unconjugated
Storage:	Store at -20°C as received.
Stability:	Stable for 12 months from date of receipt.
Predicted Protein Size:	42 kDa
Gene Name:	purinergic receptor P2Y2
Database Link:	NP_788086 Entrez Gene 18442 Mouse Entrez Gene 5029 Human P41231
Background:	The product of this gene belongs to the family of P2 receptors, which is activated by extracellular nucleotides and subdivided into P2X ligand-gated ion channels and P2Y G-protein coupled receptors. This family has several receptor subtypes with different pharmacological selectivity, which overlaps in some cases, for various adenosine and uridine nucleotides. This receptor, found on many cell types, is activated by ATP and UTP and is reported to be overexpressed on some cancer cell types. It is involved in many cellular functions, such as proliferation, apoptosis and inflammation. Three transcript variants encoding the same protein have been identified for this gene.



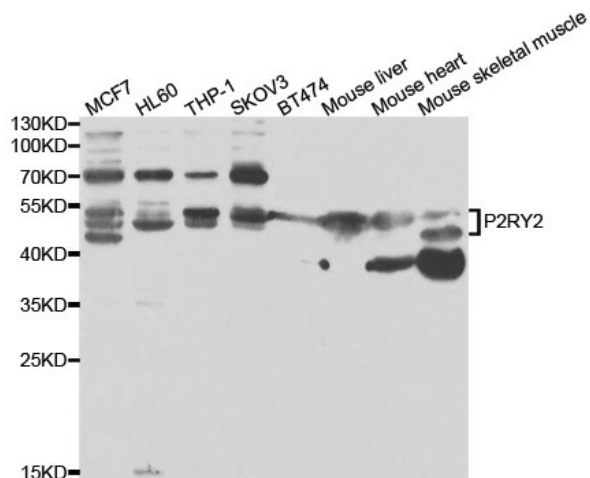
[View online »](#)

Synonyms: HP2U; P2RU1; P2U; P2U1; P2UR; P2Y2; P2Y2R

Protein Families: Druggable Genome, GPCR, Transmembrane

Protein Pathways: Neuroactive ligand-receptor interaction

Product images:



Western blot analysis of extracts of various cell lines, using P2RY2 antibody.