

Product datasheet for TA332909S

IKB beta (NFKBIB) Rabbit Polyclonal Antibody

Product data:

Product Type:	Primary Antibodies
Applications:	ELISA, IHC, WB
Recommended Dilution:	WB, 1:500 - 1:2000 IHC-P, 1:50 - 1:200 ELISA, Recommended starting concentration is 1 µg/mL. Please optimize the concentration based on your specific assay requirements.
Reactivity:	Human, Mouse, Rat
Host:	Rabbit
Isotype:	IgG
Clonality:	Polyclonal
Formulation:	Store at -20°C (regular) and -80°C (long term). Avoid freeze / thaw cycles. Buffer: PBS with 0.02% sodium azide, 50% glycerol, pH7.3.
Concentration:	lot specific
Purification:	Affinity purification
Conjugation:	Unconjugated
Storage:	Store at -20°C. Avoid freeze / thaw cycles.
Stability:	Stable for 12 months from date of receipt.
Predicted Protein Size:	38kDa
Gene Name:	NFKB inhibitor beta
Database Link:	NP_002494 Entrez Gene 18036 Mouse Entrez Gene 81525 Rat Entrez Gene 4793 Human Q15653
Background:	The protein encoded by this gene belongs to the NF-kappa-B inhibitor family, which inhibit NF-kappa-B by complexing with, and trapping it in the cytoplasm. Phosphorylation of serine residues on these proteins by kinases marks them for destruction via the ubiquitination pathway, thereby allowing activation of the NF-kappa-B, which translocates to the nucleus to function as a transcription factor. Alternatively spliced transcript variants have been found for this gene.

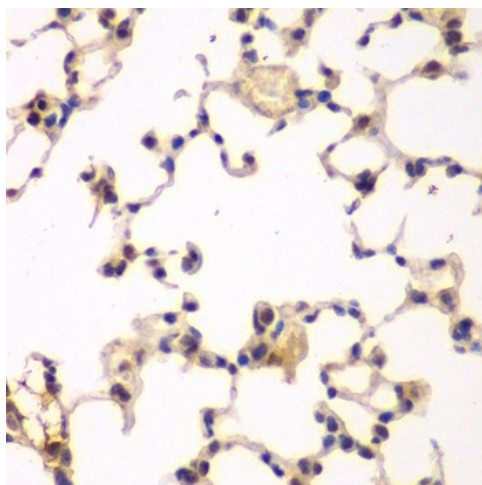
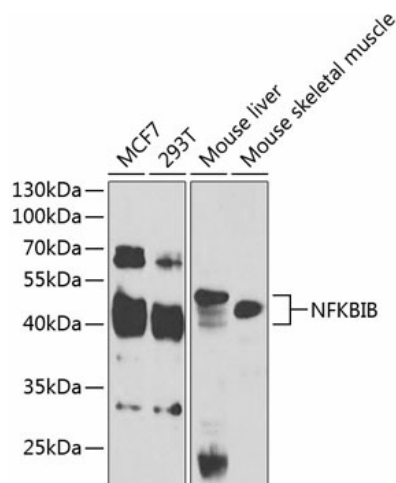

[View online »](#)

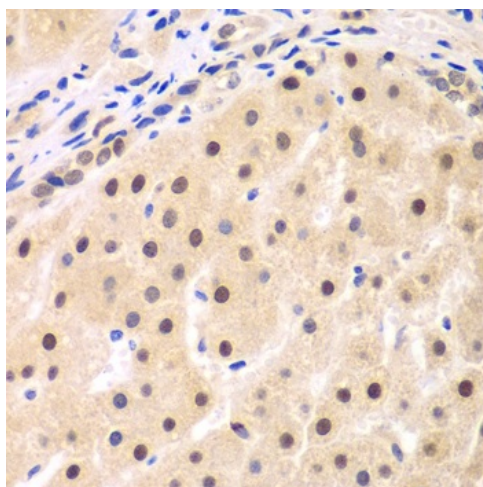
Synonyms: IKBB; TRIP9

Protein Families: Stem cell - Pluripotency, Transcription Factors

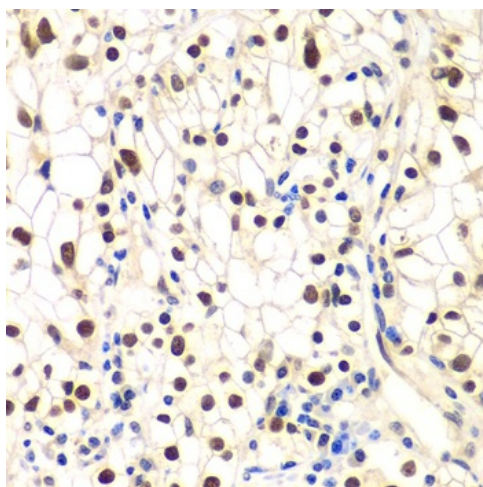
Protein Pathways: Adipocytokine signaling pathway, B cell receptor signaling pathway, Chemokine signaling pathway, Cytosolic DNA-sensing pathway, Neurotrophin signaling pathway, NOD-like receptor signaling pathway, RIG-I-like receptor signaling pathway, T cell receptor signaling pathway

Product images:





Immunohistochemistry analysis of paraffin-embedded Human liver cancer using NFKBIB Rabbit pAb ([TA332909]) at dilution of 1:200 (40x lens). Microwave antigen retrieval performed with 0.01M PBS Buffer (pH 7.2) prior to IHC staining.



Immunohistochemistry analysis of paraffin-embedded Human kidney cancer using NFKBIB Rabbit pAb ([TA332909]) at dilution of 1:200 (40x lens). Microwave antigen retrieval performed with 0.01M PBS Buffer (pH 7.2) prior to IHC staining.