

## Product datasheet for **TA332907**

### HEXIM1 Rabbit Polyclonal Antibody

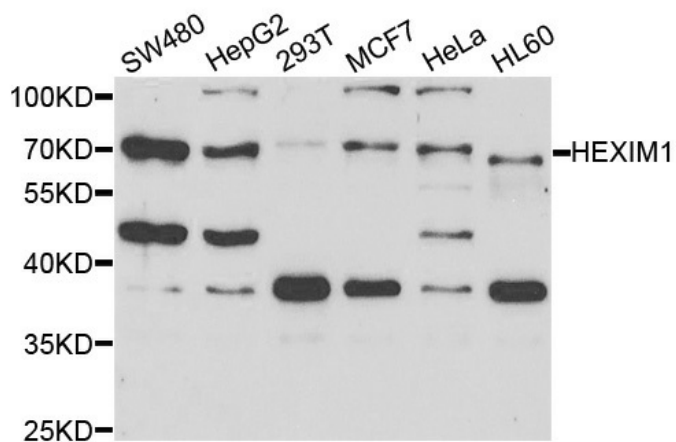
#### Product data:

Product Type:	Primary Antibodies
Applications:	WB
Recommended Dilution:	WB 1:500 - 1:2000
Reactivity:	Human, Rat
Host:	Rabbit
Isotype:	IgG
Clonality:	Polyclonal
Immunogen:	Recombinant protein of human HEXIM1
Formulation:	Store at -20°C (regular) and -80°C (long term). Avoid freeze / thaw cycles. Buffer: PBS with 0.02% sodium azide, 50% glycerol, pH7.3.
Concentration:	lot specific
Purification:	Affinity purification
Conjugation:	Unconjugated
Storage:	Store at -20°C as received.
Stability:	Stable for 12 months from date of receipt.
Predicted Protein Size:	359
Gene Name:	hexamethylene bis-acetamide inducible 1
Database Link:	<a href="#">NP_006451</a> <a href="#">Entrez Gene 498008 Rat</a> <a href="#">Entrez Gene 10614 Human</a> <a href="#">O94992</a>
Background:	Expression of this gene is induced by hexamethylene-bis-acetamide in vascular smooth muscle cells. This gene has no introns.
Synonyms:	CLP1; EDG1; HIS1; MAQ1
Protein Families:	Transcription Factors



[View online »](#)

## Product images:



Western blot analysis of extracts of various cell lines, using HEXIM1 antibody.