

Product datasheet for **TA332904**

DIAPH1 Rabbit Polyclonal Antibody

Product data:

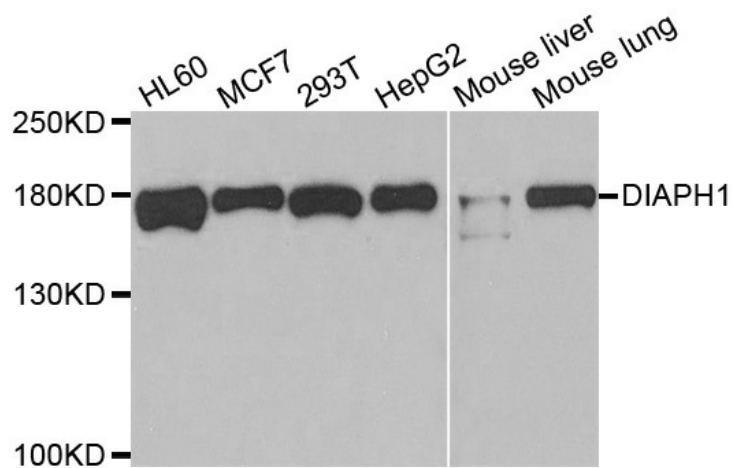
Product Type:	Primary Antibodies
Applications:	WB
Recommended Dilution:	WB 1:500 - 1:2000
Reactivity:	Human, Mouse, Rat
Host:	Rabbit
Isotype:	IgG
Clonality:	Polyclonal
Immunogen:	Recombinant protein of human DIAPH1
Formulation:	Store at -20°C (regular) and -80°C (long term). Avoid freeze / thaw cycles. Buffer: PBS with 0.02% sodium azide, 50% glycerol, pH7.3.
Concentration:	lot specific
Purification:	Affinity purification
Conjugation:	Unconjugated
Storage:	Store at -20°C as received.
Stability:	Stable for 12 months from date of receipt.
Gene Name:	diaphanous related formin 1
Database Link:	NP_005210 Entrez Gene 13367 Mouse Entrez Gene 307483 Rat Entrez Gene 1729 Human O60610
Background:	This gene is a homolog of the Drosophila diaphanous gene, and has been linked to autosomal dominant, fully penetrant, nonsyndromic sensorineural progressive low-frequency hearing loss. Actin polymerization involves proteins known to interact with diaphanous protein in Drosophila and mouse. It has therefore been speculated that this gene may have a role in the regulation of actin polymerization in hair cells of the inner ear. Alternatively spliced transcript variants encoding distinct isoforms have been found for this gene.
Synonyms:	DFNA1; DIA1; DRF1; hDIA1; LFHL1; SCBMS
Protein Families:	Druggable Genome, Stem cell - Pluripotency



[View online »](#)

Protein Pathways: Focal adhesion, Regulation of actin cytoskeleton

Product images:



Western blot analysis of extracts of various cell lines, using DIAPH1 antibody.