

Product datasheet for **TA332903**

CDKAL1 Rabbit Polyclonal Antibody

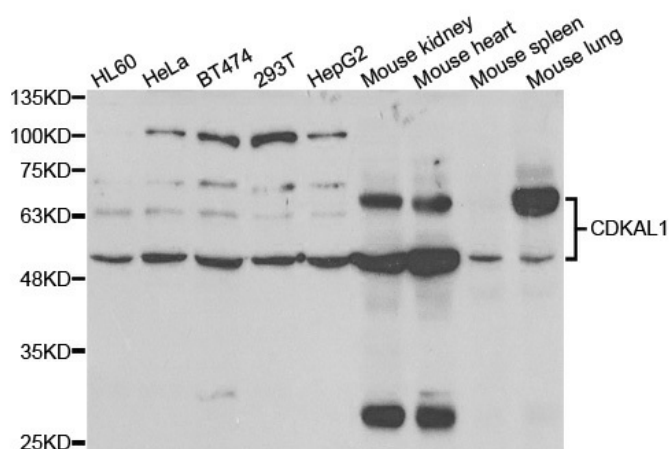
Product data:

Product Type:	Primary Antibodies
Applications:	ICC/IF, WB
Recommended Dilution:	WB 1:500 - 1:2000;IF 1:50 - 1:200
Reactivity:	Human, Mouse
Host:	Rabbit
Isotype:	IgG
Clonality:	Polyclonal
Immunogen:	Recombinant protein of human CDKAL1
Formulation:	Store at -20°C (regular) and -80°C (long term). Avoid freeze / thaw cycles. Buffer: PBS with 0.02% sodium azide, 50% glycerol, pH7.3.
Concentration:	lot specific
Purification:	Affinity purification
Conjugation:	Unconjugated
Storage:	Store at -20°C as received.
Stability:	Stable for 12 months from date of receipt.
Predicted Protein Size:	65 kDa
Gene Name:	CDK5 regulatory subunit associated protein 1 like 1
Database Link:	NP_060244 Entrez Gene 68916 Mouse Entrez Gene 54901 Human Q5VV42
Background:	The protein encoded by this gene is a member of the methyltransferase family. The function of this gene is not known. Genome-wide association studies have linked single nucleotide polymorphisms in an intron of this gene with susceptibility to type 2 diabetes.
Synonyms:	FLJ20342; FLJ46705; MGC75469
Protein Families:	Transmembrane



[View online »](#)

Product images:



Western blot analysis of extracts of various cell lines, using CDKAL1 antibody.