

Product datasheet for **TA332900**

PHAP1 (ANP32A) Rabbit Polyclonal Antibody

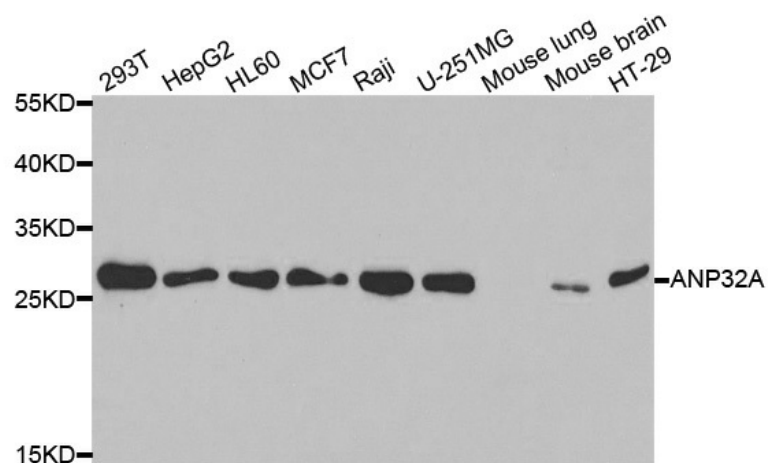
Product data:

Product Type:	Primary Antibodies
Applications:	IHC, WB
Recommended Dilution:	WB 1:500 - 1:2000
Reactivity:	Human, Mouse, Rat
Host:	Rabbit
Isotype:	IgG
Clonality:	Polyclonal
Immunogen:	Recombinant protein of human ANP32A
Formulation:	Store at -20°C (regular) and -80°C (long term). Avoid freeze / thaw cycles. Buffer: PBS with 0.02% sodium azide, 50% glycerol, pH7.3.
Concentration:	lot specific
Purification:	Affinity purification
Conjugation:	Unconjugated
Storage:	Store at -20°C as received.
Stability:	Stable for 12 months from date of receipt.
Predicted Protein Size:	249
Gene Name:	acidic nuclear phosphoprotein 32 family member A
Database Link:	NP_006296 Entrez Gene 11737 Mouse Entrez Gene 25379 Rat Entrez Gene 8125 Human P39687
Synonyms:	C15orf1; HPPCn; I1PP2A; LANP; MAPM; PHAP1; PHAPI; PP32
Protein Families:	Druggable Genome, Stem cell - Pluripotency



[View online »](#)

Product images:



Western blot analysis of extracts of various cell lines, using ANP32A antibody.