

## Product datasheet for **TA332899S**

### SNF5 (SMARCB1) Rabbit Polyclonal Antibody

#### Product data:

Product Type:	Primary Antibodies
Applications:	ELISA, ICC/IF, IHC, IP, WB
Recommended Dilution:	WB, 1:500 - 1:2000 IHC-P, 1:50 - 1:200 IF/ICC, 1:50 - 1:200 IP, 0.5µg-4µg antibody for 200µg-400µg extracts of whole cells ELISA, Recommended starting concentration is 1 µg/mL. Please optimize the concentration based on your specific assay requirements.
Reactivity:	Human, Mouse, Rat
Host:	Rabbit
Isotype:	IgG
Clonality:	Polyclonal
Formulation:	Store at -20°C (regular) and -80°C (long term). Avoid freeze / thaw cycles. Buffer: PBS with 0.02% sodium azide, 50% glycerol, pH7.3.
Concentration:	lot specific
Purification:	Affinity purification
Conjugation:	Unconjugated
Storage:	Store at -20°C. Avoid freeze / thaw cycles.
Stability:	Stable for 12 months from date of receipt.
Predicted Protein Size:	44kDa
Gene Name:	SWI/SNF related, matrix associated, actin dependent regulator of chromatin, subfamily b, member 1
Database Link:	<a href="#">NP_003064</a> <a href="#">Entrez Gene 20587 Mouse</a> <a href="#">Entrez Gene 361825 Rat</a> <a href="#">Entrez Gene 6598 Human</a> <a href="#">Q12824</a>



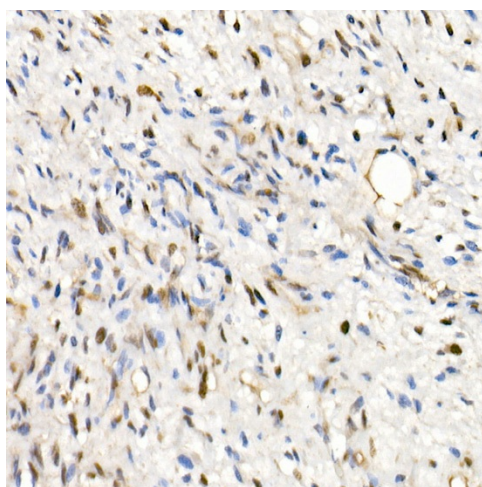
[View online »](#)

**Background:** The protein encoded by this gene is part of a complex that relieves repressive chromatin structures, allowing the transcriptional machinery to access its targets more effectively. The encoded nuclear protein may also bind to and enhance the DNA joining activity of HIV-1 integrase. This gene has been found to be a tumor suppressor, and mutations in it have been associated with malignant rhabdoid tumors. Alternatively spliced transcript variants have been found for this gene.

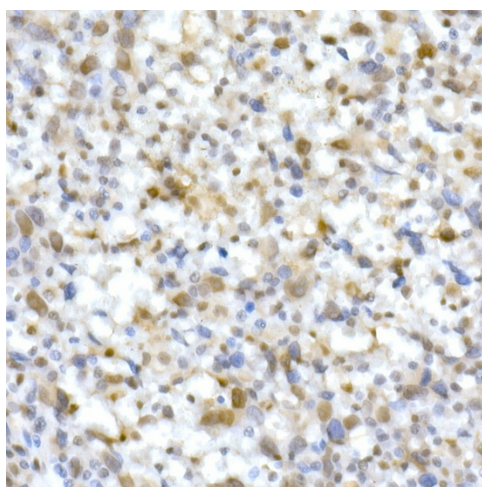
**Synonyms:** BAF47; CSS3; hSNFS; INI1; MRD15; PPP1R144; RDT; RTPS1; Sfh1p; SNF5; SNF5L1; Snr1; SWNTS1

**Protein Families:** Transcription Factors

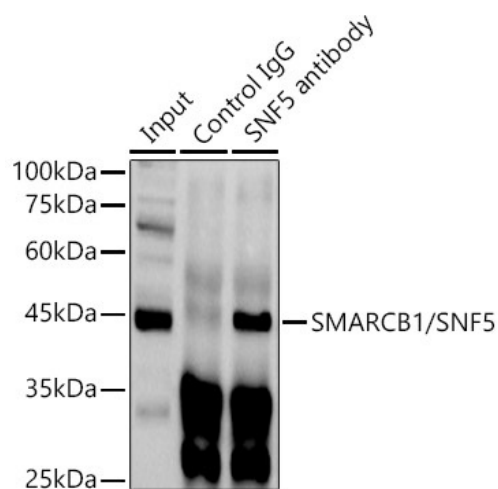
### Product images:



Western blot analysis of various lysates



Immunohistochemistry analysis of paraffin-embedded Human epithelioid sarcoma (ini-1 deletion) using SMARCB1/SNF5 Rabbit pAb ([TA332899]) at dilution of 1:200 (40x lens). High pressure antigen retrieval performed with 0.01M Citrate Bufferr (pH 6.0) prior to IHC staining.



Immunohistochemistry analysis of paraffin-embedded Undifferentiated carcinoma of human esophagus using SMARCB1/SNF5 Rabbit pAb ([TA332899]) at dilution of 1:200 (40x lens). High pressure antigen retrieval performed with 0.01M Citrate Bufferr (pH 6.0) prior to IHC staining.