

## Product datasheet for **TA332898**

### NR5A2 Rabbit Polyclonal Antibody

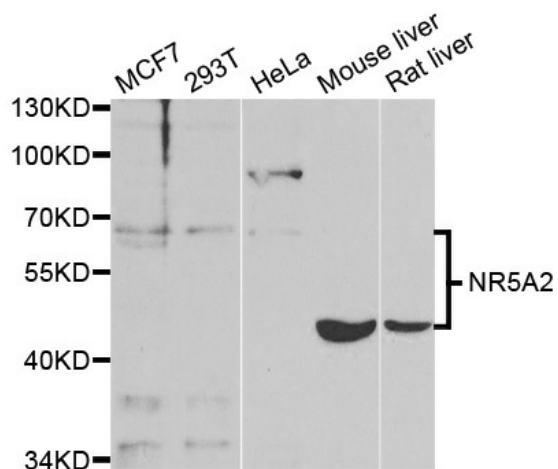
#### Product data:

Product Type:	Primary Antibodies
Applications:	ICC/IF, IHC, WB
Recommended Dilution:	WB 1:500 - 1:2000;IF 1:50- 1:200
Reactivity:	Human, Mouse, Rat
Host:	Rabbit
Isotype:	IgG
Clonality:	Polyclonal
Immunogen:	Recombinant protein of human NR5A2
Formulation:	Store at -20°C (regular) and -80°C (long term). Avoid freeze / thaw cycles. Buffer: PBS with 0.02% sodium azide, 50% glycerol, pH7.3.
Concentration:	lot specific
Purification:	Affinity purification
Conjugation:	Unconjugated
Storage:	Store at -20°C as received.
Stability:	Stable for 12 months from date of receipt.
Gene Name:	nuclear receptor subfamily 5 group A member 2
Database Link:	<a href="#">NP_003813</a> <a href="#">Entrez Gene 26424 Mouse</a> <a href="#">Entrez Gene 60349 Rat</a> <a href="#">Entrez Gene 2494 Human</a> <a href="#">O00482</a>
Synonyms:	B1F; B1F2; CPF; FTF; FTZ-F1; FTZ-F1beta; hB1F-2; LRH-1; LRH1
Protein Families:	Druggable Genome, Nuclear Hormone Receptor, Transcription Factors
Protein Pathways:	Maturity onset diabetes of the young

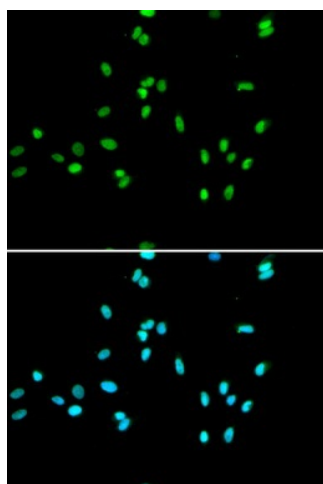


[View online »](#)

Product images:



Western blot analysis of extracts of various cell lines, using NR5A2 antibody.



Immunofluorescence analysis of A549 cell using NR5A2 antibody. Blue: DAPI for nuclear staining.