

Product datasheet for **TA332894**

HTRA2 Rabbit Polyclonal Antibody

Product data:

Product Type:	Primary Antibodies
Applications:	IF, WB
Recommended Dilution:	WB 1:500 - 1:2000
Reactivity:	Human, Mouse, Rat
Host:	Rabbit
Isotype:	IgG
Clonality:	Polyclonal
Immunogen:	Recombinant protein of human HTRA2
Formulation:	Store at -20°C (regular) and -80°C (long term). Avoid freeze / thaw cycles. Buffer: PBS with 0.02% sodium azide, 50% glycerol, pH7.3.
Concentration:	lot specific
Purification:	Affinity purification
Conjugation:	Unconjugated
Storage:	Store at -20°C as received.
Stability:	Stable for 12 months from date of receipt.
Predicted Protein Size:	458
Gene Name:	HtrA serine peptidase 2
Database Link:	NP_659540 Entrez Gene 64704 Mouse Entrez Gene 297376 Rat Entrez Gene 27429 Human O43464
Background:	This gene encodes a serine protease. The protein has been localized in the endoplasmic reticulum and interacts with an alternatively spliced form of mitogen-activated protein kinase 14. The protein has also been localized to the mitochondria with release to the cytosol following apoptotic stimulus. The protein is thought to induce apoptosis by binding the apoptosis inhibitory protein baculoviral IAP repeat-containing 4. Nuclear localization of this protein has also been observed. Alternate splicing of this gene results in two transcript variants encoding different isoforms. Additional transcript variants have been described, but their full-length sequences have not been determined.



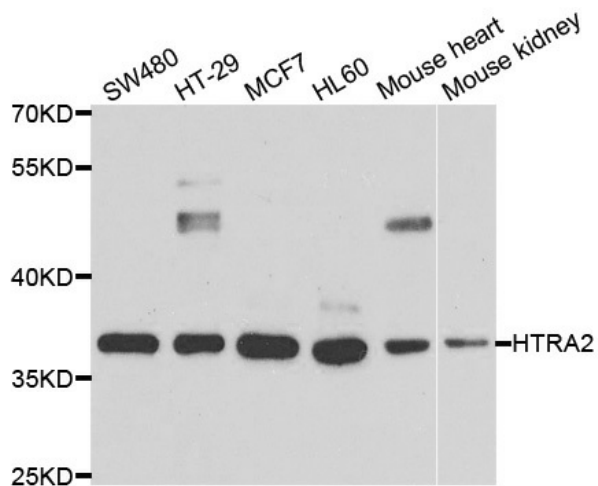
[View online »](#)

Synonyms: OMI; PARK13; PRSS25

Protein Families: Druggable Genome, Protease, Transmembrane

Protein Pathways: Parkinson's disease

Product images:



Western blot analysis of extracts of various cell lines, using HTRA2 antibody.