

Product datasheet for **TA33288S**

Poliovirus Receptor (PVR) Rabbit Polyclonal Antibody

Product data:

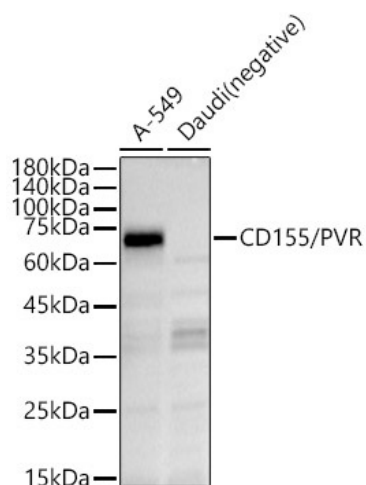
Product Type:	Primary Antibodies
Applications:	ELISA, WB
Recommended Dilution:	WB, 1:100 - 1:500 ELISA, Recommended starting concentration is 1 µg/mL. Please optimize the concentration based on your specific assay requirements.
Reactivity:	Human, Mouse
Host:	Rabbit
Isotype:	IgG
Clonality:	Polyclonal
Formulation:	PBS with 0.09% Sodium azide, 50% glycerol, pH 7.3.
Concentration:	lot specific
Purification:	Affinity purification
Conjugation:	Unconjugated
Storage:	Store at -20°C. Avoid freeze / thaw cycles.
Stability:	Stable for 12 months from date of receipt.
Predicted Protein Size:	45kDa
Gene Name:	poliovirus receptor
Database Link:	NP_006496 Entrez Gene 52118 Mouse Entrez Gene 5817 Human P15151
Background:	The protein encoded by this gene is a transmembrane glycoprotein belonging to the immunoglobulin superfamily. The external domain mediates cell attachment to the extracellular matrix molecule vitronectin, while its intracellular domain interacts with the dynein light chain Tctex-1/DYNLT1. The gene is specific to the primate lineage, and serves as a cellular receptor for poliovirus in the first step of poliovirus replication. Multiple transcript variants encoding different isoforms have been found for this gene.
Synonyms:	CD155; HVED; Necl-5; NECL5; PVS; TAGE4
Protein Families:	Druggable Genome, Transmembrane



[View online »](#)

Protein Pathways: Cell adhesion molecules (CAMs)

Product images:



Western blot analysis of various lysates