

Product datasheet for **TA332888**

Poliovirus Receptor (PVR) Rabbit Polyclonal Antibody

Product data:

Product Type:	Primary Antibodies
Applications:	WB
Recommended Dilution:	WB 1:500 - 1:2000
Reactivity:	Human, Mouse
Host:	Rabbit
Isotype:	IgG
Clonality:	Polyclonal
Immunogen:	Recombinant protein of human PVR
Formulation:	PBS with 0.09% Sodium azide, 50% glycerol, pH7.3.
Concentration:	lot specific
Purification:	Affinity purification
Conjugation:	Unconjugated
Storage:	Store at -20°C as received.
Stability:	Stable for 12 months from date of receipt.
Predicted Protein Size:	417
Gene Name:	poliovirus receptor
Database Link:	NP_006496 Entrez Gene 52118 Mouse Entrez Gene 5817 Human P15151

Background: The protein encoded by this gene is a transmembrane glycoprotein belonging to the immunoglobulin superfamily. The external domain mediates cell attachment to the extracellular matrix molecule vitronectin, while its intracellular domain interacts with the dynein light chain Tctex-1/DYNLT1. The gene is specific to the primate lineage, and serves as a cellular receptor for poliovirus in the first step of poliovirus replication. Multiple transcript variants encoding different isoforms have been found for this gene.

Synonyms: CD155; HVED; Necl-5; NECL5; PVS; TAGE4

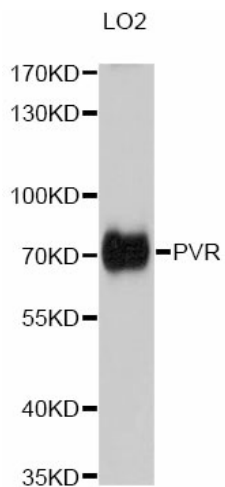
Protein Families: Druggable Genome, Transmembrane



[View online »](#)

Protein Pathways: Cell adhesion molecules (CAMs)

Product images:



Western blot analysis of extracts of various cell lines, using PVR antibody.