

## Product datasheet for **TA332882**

### G protein alpha 13 (GNA13) Rabbit Polyclonal Antibody

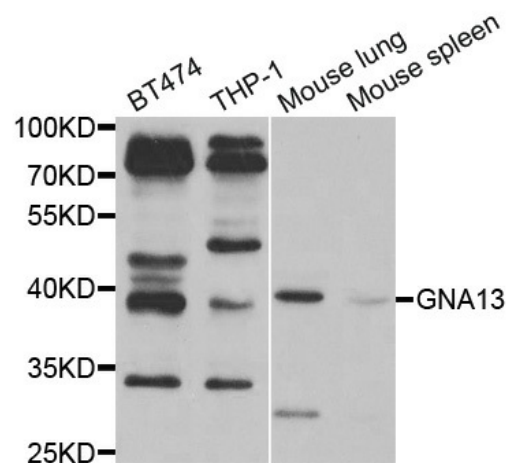
#### Product data:

|                         |   |
|-------------------------|---|
| Product Type:           | Primary Antibodies  |
| Applications:           | WB  |
| Recommended Dilution:   | WB 1:500 - 1:2000   |
| Reactivity:             | Human, Mouse, Rat   |
| Host:                   | Rabbit  |
| Isotype:                | IgG   |
| Clonality:              | Polyclonal  |
| Immunogen:              | Recombinant protein of human GNA13  |
| Formulation:            | Store at -20°C (regular) and -80°C (long term). Avoid freeze / thaw cycles. Buffer: PBS with 0.02% sodium azide, 50% glycerol, pH7.3. |
| Concentration:          | lot specific  |
| Purification:           | Affinity purification   |
| Conjugation:            | Unconjugated  |
| Storage:                | Store at -20°C as received.   |
| Stability:              | Stable for 12 months from date of receipt.  |
| Predicted Protein Size: | 377   |
| Gene Name:              | G protein subunit alpha 13  |
| Database Link:          | <a href="#">NP_006563</a><br><a href="#">Entrez Gene 14674 MouseEntrez Gene 303634 RatEntrez Gene 10672 Human Q14344</a>              |
| Synonyms:               | G13   |
| Protein Families:       | Druggable Genome  |
| Protein Pathways:       | Long-term depression, Regulation of actin cytoskeleton, Vascular smooth muscle contraction  |



[View online »](#)

## Product images:



Western blot analysis of extracts of various cell lines, using GNA13 antibody.