

Product datasheet for **TA332875**

CLCN1 Rabbit Polyclonal Antibody

Product data:

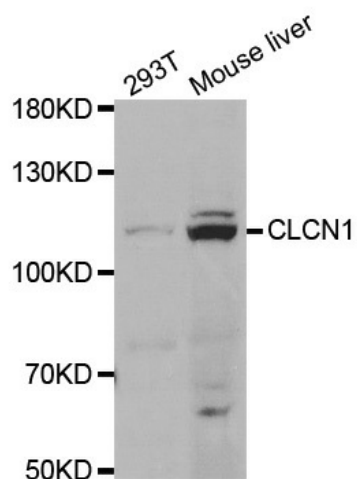
Product Type:	Primary Antibodies
Applications:	IHC, WB
Recommended Dilution:	WB 1:500 - 1:2000
Reactivity:	Human, Mouse, Rat
Host:	Rabbit
Isotype:	IgG
Clonality:	Polyclonal
Immunogen:	Recombinant protein of human CLCN1
Formulation:	Store at -20°C (regular) and -80°C (long term). Avoid freeze / thaw cycles. Buffer: PBS with 0.02% sodium azide, 50% glycerol, pH7.3.
Concentration:	lot specific
Purification:	Affinity purification
Conjugation:	Unconjugated
Storage:	Store at -20°C as received.
Stability:	Stable for 12 months from date of receipt.
Predicted Protein Size:	988
Gene Name:	chloride voltage-gated channel 1
Database Link:	NP_000074 Entrez Gene 12723 MouseEntrez Gene 25688 RatEntrez Gene 1180 Human P35523
Background:	The CLCN family of voltage-dependent chloride channel genes comprises nine members (CLCN1-7, Ka and Kb) which demonstrate quite diverse functional characteristics while sharing significant sequence homology. The protein encoded by this gene regulates the electric excitability of the skeletal muscle membrane. Mutations in this gene cause two forms of inherited human muscle disorders: recessive generalized myotonia congenita (Becker) and dominant myotonia (Thomsen). Alternative splicing results in multiple transcript variants.
Synonyms:	CLC1



[View online »](#)

Protein Families: Druggable Genome, Ion Channels: Other, Transmembrane

Product images:



Western blot analysis of extracts of various cell lines, using CLCN1 antibody.