

## Product datasheet for **TA332869**

### PRPF31 Rabbit Polyclonal Antibody

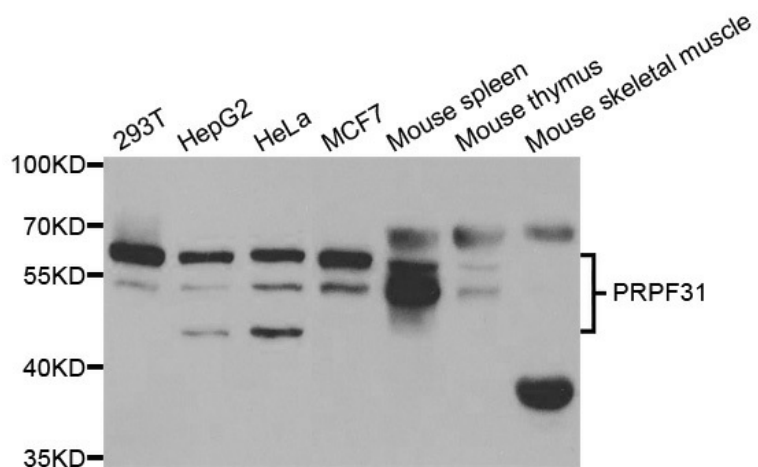
#### Product data:

Product Type:	Primary Antibodies
Applications:	IHC, WB
Recommended Dilution:	WB 1:500 - 1:2000
Reactivity:	Human, Mouse, Rat
Host:	Rabbit
Isotype:	IgG
Clonality:	Polyclonal
Immunogen:	Recombinant protein of human PRPF31
Formulation:	PBS with 0.09% Sodium azide, 50% glycerol, pH7.3.
Concentration:	lot specific
Purification:	Affinity purification
Conjugation:	Unconjugated
Storage:	Store at -20°C as received.
Stability:	Stable for 12 months from date of receipt.
Predicted Protein Size:	499
Gene Name:	pre-mRNA processing factor 31
Database Link:	<a href="#">NP_056444</a> <a href="#">Entrez Gene 68988 Mouse</a> <a href="#">Entrez Gene 292536 Rat</a> <a href="#">Entrez Gene 26121 Human</a> <a href="#">Q8WWY3</a>
Background:	This gene encodes a component of the spliceosome complex and is one of several retinitis pigmentosa-causing genes. When the gene product is added to the spliceosome complex, activation occurs.
Synonyms:	NY-BR-99; PRP31; RP11; SNRNP61
Protein Families:	Druggable Genome
Protein Pathways:	Spliceosome



[View online »](#)

## Product images:



Western blot analysis of extracts of various cell lines, using PRPF31 antibody.