

Product datasheet for **TA332866**

Heparanase 1 (HPSE) Rabbit Polyclonal Antibody

Product data:

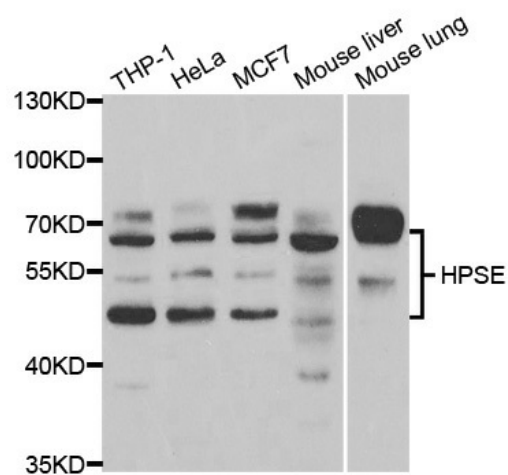
Product Type:	Primary Antibodies
Applications:	ICC/IF, WB
Recommended Dilution:	WB 1:500 - 1:2000;IF 1:50 - 1:200
Reactivity:	Human, Mouse, Rat
Host:	Rabbit
Isotype:	IgG
Clonality:	Polyclonal
Immunogen:	Recombinant protein of human HPSE
Formulation:	Store at -20°C (regular) and -80°C (long term). Avoid freeze / thaw cycles. Buffer: PBS with 0.02% sodium azide, 50% glycerol, pH7.3.
Concentration:	lot specific
Purification:	Affinity purification
Conjugation:	Unconjugated
Storage:	Store at -20°C as received.
Stability:	Stable for 12 months from date of receipt.
Predicted Protein Size:	61 kDa
Gene Name:	heparanase
Database Link:	NP_006656 Entrez Gene 15442 MouseEntrez Gene 64537 RatEntrez Gene 10855 Human Q9Y251
Background:	Heparan sulfate proteoglycans are major components of the basement membrane and extracellular matrix. The protein encoded by this gene is an enzyme that cleaves heparan sulfate proteoglycans to permit cell movement through remodeling of the extracellular matrix. In addition, this cleavage can release bioactive molecules from the extracellular matrix. Several transcript variants encoding different isoforms have been found for this gene.
Synonyms:	HPA; HPA1; HPR1; HPSE1; HSE1
Protein Families:	Secreted Protein



[View online »](#)

Protein Pathways: Glycosaminoglycan degradation, Metabolic pathways

Product images:



Western blot analysis of extracts of various cell lines, using HPSE antibody.