

## Product datasheet for TA332865S

### Caspase 2 (CASP2) Rabbit Polyclonal Antibody

#### Product data:

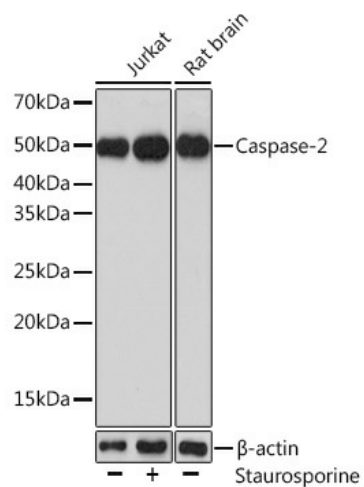
Product Type:	Primary Antibodies
Applications:	ELISA, WB
Recommended Dilution:	WB, 1:500 - 1:2000 ELISA, Recommended starting concentration is 1 µg/mL. Please optimize the concentration based on your specific assay requirements.
Reactivity:	Human, Mouse, Rat
Host:	Rabbit
Isotype:	IgG
Clonality:	Polyclonal
Formulation:	Store at -20°C (regular) and -80°C (long term). Avoid freeze / thaw cycles. Buffer: PBS with 0.02% sodium azide, 50% glycerol, pH7.3.
Concentration:	lot specific
Purification:	Affinity purification
Conjugation:	Unconjugated
Storage:	Store at -20°C. Avoid freeze / thaw cycles.
Stability:	Stable for 12 months from date of receipt.
Predicted Protein Size:	51kDa
Gene Name:	caspase 2
Database Link:	<a href="#">NP_001215</a> <a href="#">Entrez Gene 12366 Mouse</a> <a href="#">Entrez Gene 64314 Rat</a> <a href="#">Entrez Gene 835 Human</a> <a href="#">P42575</a>
Background:	This gene encodes a member of the cysteine-aspartic acid protease (caspase) family. Caspases mediate cellular apoptosis through the proteolytic cleavage of specific protein substrates. The encoded protein may function in stress-induced cell death pathways, cell cycle maintenance, and the suppression of tumorigenesis. Increased expression of this gene may play a role in neurodegenerative disorders including Alzheimer's disease, Huntington's disease and temporal lobe epilepsy. Alternatively spliced transcript variants encoding multiple isoforms have been observed for this gene.


[View online »](#)

**Synonyms:** CASP-2; ICH1; NEDD-2; NEDD2; PPP1R57

**Protein Families:** Druggable Genome, Protease

**Product images:**



Western blot analysis of various lysates using Caspase-2 Rabbit pAb ([TA332865]) at 1:1000 dilution. Jurkat cells were treated by Staurosporine(1uM) at room temperature for 3 hours .

Secondary antibody: HRP-conjugated Goat anti-Rabbit IgG (H+L) (AS014) at 1:10000 dilution.

Lysates/proteins: 25 $\mu$ g per lane.

Blocking buffer: 3% nonfat dry milk in TBST.

Detection: ECL Basic Kit (RM00020).

Exposure time: 3min.