

Product datasheet for **TA332858**

PKC zeta (PRKCZ) Rabbit Polyclonal Antibody

Product data:

Product Type:	Primary Antibodies
Applications:	ICC/IF, WB
Recommended Dilution:	WB 1:500 - 1:1000
Reactivity:	Human, Mouse, Rat
Host:	Rabbit
Isotype:	IgG
Clonality:	Polyclonal
Immunogen:	A synthetic peptide of human PKCz
Formulation:	Store at -20°C (regular) and -80°C (long term). Avoid freeze / thaw cycles. Buffer: PBS with 0.02% sodium azide, 50% glycerol, pH7.3.
Concentration:	lot specific
Purification:	Affinity purification
Conjugation:	Unconjugated
Storage:	Store at -20°C as received.
Stability:	Stable for 12 months from date of receipt.
Predicted Protein Size:	592
Gene Name:	protein kinase C zeta
Database Link:	NP_002735 Entrez Gene 18762 Mouse Entrez Gene 25522 Rat Entrez Gene 5590 Human Q05513



[View online »](#)

Background:

Protein kinase C (PKC) zeta is a member of the PKC family of serine/threonine kinases which are involved in a variety of cellular processes such as proliferation, differentiation and secretion. Unlike the classical PKC isoenzymes which are calcium-dependent, PKC zeta exhibits a kinase activity which is independent of calcium and diacylglycerol but not of phosphatidylserine. Furthermore, it is insensitive to typical PKC inhibitors and cannot be activated by phorbol ester. Unlike the classical PKC isoenzymes, it has only a single zinc finger module. These structural and biochemical properties indicate that the zeta subspecies is related to, but distinct from other isoenzymes of PKC. Alternative splicing results in multiple transcript variants encoding different isoforms.

Synonyms:

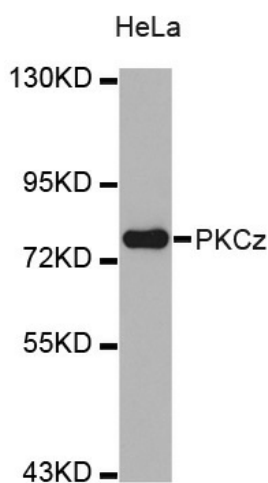
PKC-ZETA; PKC2

Protein Families:

Druggable Genome, Protein Kinase

Protein Pathways:

Chemokine signaling pathway, Endocytosis, Insulin signaling pathway, Tight junction, Type II diabetes mellitus

Product images:

Western blot analysis of extracts of HeLa cell line, using PKCz antibody.