

## Product datasheet for **TA332854S**

### Chloride Channel 5 (CLCN5) Rabbit Polyclonal Antibody

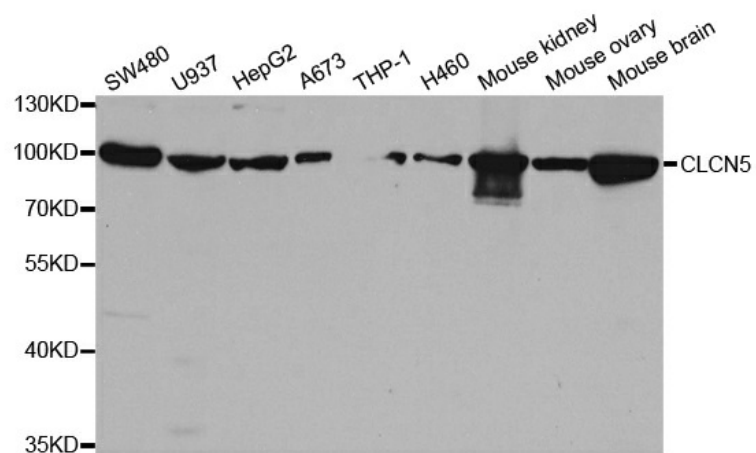
#### Product data:

Product Type:	Primary Antibodies
Applications:	WB
Recommended Dilution:	WB 1:500 - 1:2000
Reactivity:	Human, Mouse
Host:	Rabbit
Isotype:	IgG
Clonality:	Polyclonal
Immunogen:	Recombinant protein of human CLCN5
Formulation:	Store at -20°C (regular) and -80°C (long term). Avoid freeze / thaw cycles. Buffer: PBS with 0.02% sodium azide, 50% glycerol, pH7.3.
Concentration:	lot specific
Purification:	Affinity purification
Conjugation:	Unconjugated
Storage:	Store at -20°C as received.
Stability:	Stable for 12 months from date of receipt.
Predicted Protein Size:	83 kDa
Gene Name:	chloride voltage-gated channel 5
Database Link:	<a href="#">NP_000075</a> <a href="#">Entrez Gene 12728 Mouse</a> <a href="#">Entrez Gene 1184 Human</a> <a href="#">P51795</a>
Background:	This gene encodes a member of the CIC family of chloride ion channels and ion transporters. The encoded protein is primarily localized to endosomal membranes and may function to facilitate albumin uptake by the renal proximal tubule. Mutations in this gene have been found in Dent disease and renal tubular disorders complicated by nephrolithiasis. Alternatively spliced transcript variants have been found for this gene.
Synonyms:	CIC-5; CLC5; CLCK2; DENTS; hCIC-K2; NPHL1; NPHL2; XLRH; XRN
Protein Families:	Druggable Genome, Ion Channels: Other, Transmembrane



[View online »](#)

## Product images:



Western blot analysis of extracts of various cell lines, using CLCN5 antibody.