

## Product datasheet for **TA332853S**

### CD98 (SLC3A2) Rabbit Polyclonal Antibody

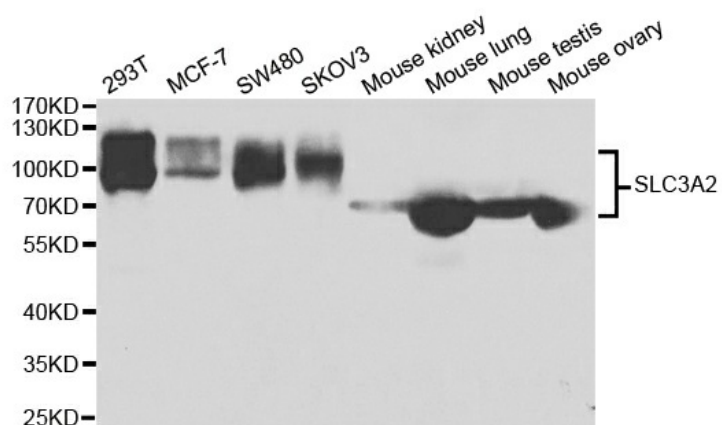
#### Product data:

Product Type:	Primary Antibodies
Applications:	IHC, WB
Recommended Dilution:	WB 1:500 - 1:2000
Reactivity:	Human, Mouse, Rat
Host:	Rabbit
Isotype:	IgG
Clonality:	Polyclonal
Immunogen:	Recombinant protein of human SLC3A2
Formulation:	Store at -20°C (regular) and -80°C (long term). Avoid freeze / thaw cycles. Buffer: PBS with 0.02% sodium azide, 50% glycerol, pH7.3.
Concentration:	lot specific
Purification:	Affinity purification
Conjugation:	Unconjugated
Storage:	Store at -20°C as received.
Stability:	Stable for 12 months from date of receipt.
Gene Name:	solute carrier family 3 member 2
Database Link:	<a href="#">NP_001012680</a> <a href="#">Entrez Gene 17254 Mouse</a> <a href="#">Entrez Gene 6520 Human</a> <a href="#">P08195</a>
Background:	This gene is a member of the solute carrier family and encodes a cell surface, transmembrane protein. The protein exists as the heavy chain of a heterodimer, covalently bound through di-sulfide bonds to one of several possible light chains. The encoded transporter plays a role in regulation of intracellular calcium levels and transports L-type amino acids. Alternatively spliced transcript variants, encoding different isoforms, have been characterized.
Synonyms:	4F2; 4F2HC; 4T2HC; CD98; CD98HC; MDU1; NACAE
Protein Families:	Transmembrane



[View online »](#)

## Product images:



Western blot analysis of extracts of various cell lines, using SLC3A2 antibody.