

Product datasheet for **TA332852S**

SH3GL2 Rabbit Polyclonal Antibody

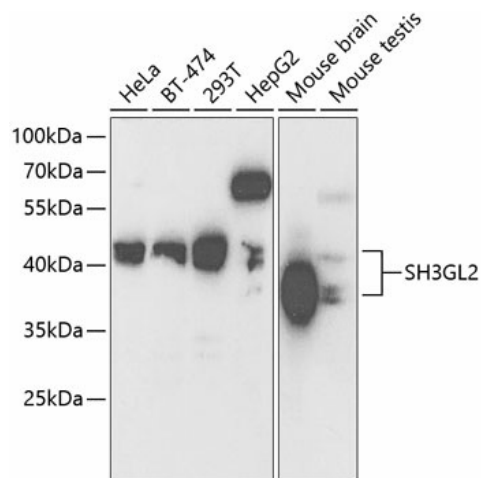
Product data:

Product Type:	Primary Antibodies
Applications:	ELISA, ICC/IF, WB
Recommended Dilution:	WB, 1:500 - 1:2000 IF/ICC, 1:50 - 1:200 ELISA, Recommended starting concentration is 1 µg/mL. Please optimize the concentration based on your specific assay requirements.
Reactivity:	Human, Mouse
Host:	Rabbit
Isotype:	IgG
Clonality:	Polyclonal
Formulation:	Store at -20°C (regular) and -80°C (long term). Avoid freeze / thaw cycles. Buffer: PBS with 0.02% sodium azide, 50% glycerol, pH7.3.
Concentration:	lot specific
Purification:	Affinity purification
Conjugation:	Unconjugated
Storage:	Store at -20°C. Avoid freeze / thaw cycles.
Stability:	Stable for 12 months from date of receipt.
Predicted Protein Size:	40kDa
Gene Name:	SH3 domain containing GRB2 like 2, endophilin A1
Database Link:	NP_003017 Entrez Gene 20404 Mouse Entrez Gene 6456 Human Q99962
Background:	Enables identical protein binding activity. Involved in negative regulation of blood-brain barrier permeability; negative regulation of gene expression; and negative regulation of protein phosphorylation. Located in perinuclear region of cytoplasm.
Synonyms:	CNSA2; EEN-B1; SH3D2A; SH3P4
Protein Pathways:	Endocytosis



[View online »](#)

Product images:



Western blot analysis of various lysates using SH3GL2 Rabbit pAb (TA332852) at 1:1000 dilution.

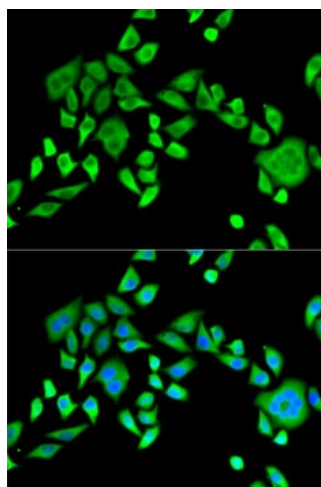
Secondary antibody: HRP-conjugated Goat anti-Rabbit IgG (H+L) (AS014) at 1:10000 dilution.

Lysates/proteins: 25µg per lane.

Blocking buffer: 3% nonfat dry milk in TBST.

Detection: ECL Basic Kit (RM00020).

Exposure time: 90s.



Immunofluorescence analysis of HeLa cells using SH3GL2 Rabbit pAb (TA332852). Secondary antibody: Cy3-conjugated Goat anti-Rabbit IgG (H+L) (AS007) at 1:500 dilution. Blue: DAPI for nuclear staining.