

Product datasheet for **TA332852**

SH3GL2 Rabbit Polyclonal Antibody

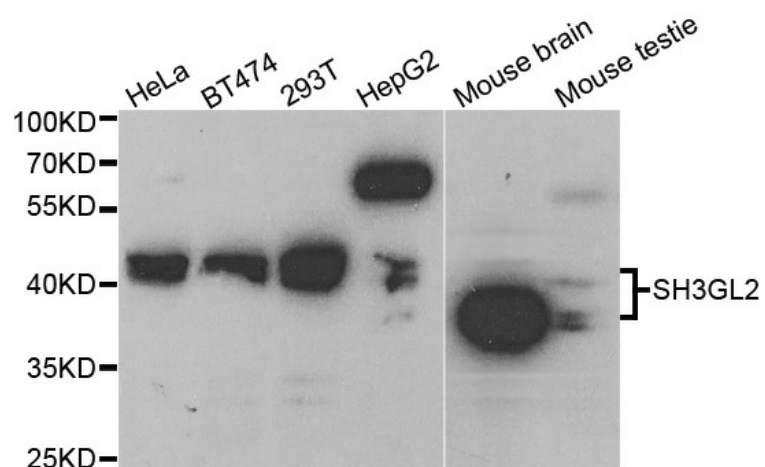
Product data:

Product Type:	Primary Antibodies
Applications:	ICC/IF, WB
Recommended Dilution:	WB 1:500 - 1:2000;IF 1:50 - 1:200
Reactivity:	Human, Mouse
Host:	Rabbit
Isotype:	IgG
Clonality:	Polyclonal
Immunogen:	Recombinant protein of human SH3GL2
Formulation:	Store at -20°C (regular) and -80°C (long term). Avoid freeze / thaw cycles. Buffer: PBS with 0.02% sodium azide, 50% glycerol, pH7.3.
Concentration:	lot specific
Purification:	Affinity purification
Conjugation:	Unconjugated
Storage:	Store at -20°C as received.
Stability:	Stable for 12 months from date of receipt.
Predicted Protein Size:	39 kDa
Gene Name:	SH3 domain containing GRB2 like 2, endophilin A1
Database Link:	NP_003017 Entrez Gene 20404 Mouse Entrez Gene 6456 Human Q99962
Synonyms:	CNSA2; EEN-B1; SH3D2A; SH3P4
Protein Pathways:	Endocytosis



[View online »](#)

Product images:



Western blot analysis of extracts of various cell lines, using SH3GL2 antibody.