

## Product datasheet for **TA332843S**

### GRB2 Rabbit Polyclonal Antibody

#### Product data:

Product Type:	Primary Antibodies
Applications:	ICC/IF, WB
Recommended Dilution:	WB 1:500 - 1:2000;IF 1:50 - 1:200
Reactivity:	Human, Mouse
Host:	Rabbit
Isotype:	IgG
Clonality:	Polyclonal
Immunogen:	Recombinant protein of human GRB2
Formulation:	Store at -20°C (regular) and -80°C (long term). Avoid freeze / thaw cycles. Buffer: PBS with 0.02% sodium azide, 50% glycerol, pH7.3.
Concentration:	lot specific
Purification:	Affinity purification
Conjugation:	Unconjugated
Storage:	Store at -20°C as received.
Stability:	Stable for 12 months from date of receipt.
Predicted Protein Size:	25 kDa
Gene Name:	growth factor receptor bound protein 2
Database Link:	<a href="#">NP_002077</a> <a href="#">Entrez Gene 14784 Mouse</a> <a href="#">Entrez Gene 2885 Human</a> <a href="#">P62993</a>
Background:	The protein encoded by this gene binds the epidermal growth factor receptor and contains one SH2 domain and two SH3 domains. Its two SH3 domains direct complex formation with proline-rich regions of other proteins, and its SH2 domain binds tyrosine phosphorylated sequences. This gene is similar to the Sem5 gene of C.elegans, which is involved in the signal transduction pathway. Two alternatively spliced transcript variants encoding different isoforms have been found for this gene.
Synonyms:	ASH; EGFRBP-GRB2; Grb3-3; MST084; MSTP084; NCKAP2

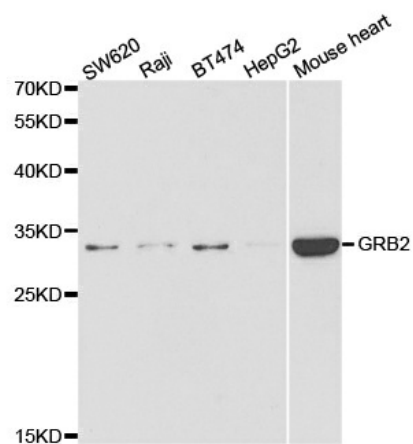


[View online »](#)

**Protein Families:** Druggable Genome

**Protein Pathways:** Acute myeloid leukemia, B cell receptor signaling pathway, Chemokine signaling pathway, Chronic myeloid leukemia, Colorectal cancer, Dorso-ventral axis formation, Endometrial cancer, ErbB signaling pathway, Fc epsilon RI signaling pathway, Focal adhesion, Gap junction, Glioma, GnRH signaling pathway, Insulin signaling pathway, Jak-STAT signaling pathway, MAPK signaling pathway, Natural killer cell mediated cytotoxicity, Neurotrophin signaling pathway, Non-small cell lung cancer, Pathways in cancer, Prostate cancer, Renal cell carcinoma, T cell receptor signaling pathway

### Product images:



Western blot analysis of extracts of various cell lines, using GRB2 antibody.