

Product datasheet for **TA332834S**

RBPJK (RBPJ) Rabbit Polyclonal Antibody

Product data:

Product Type:	Primary Antibodies
Applications:	ELISA, IHC, WB
Recommended Dilution:	WB, 1:500 - 1:2000 IHC-P, 1:50 - 1:200 ELISA, Recommended starting concentration is 1 µg/mL. Please optimize the concentration based on your specific assay requirements.
Reactivity:	Human, Mouse, Rat
Host:	Rabbit
Isotype:	IgG
Clonality:	Polyclonal
Formulation:	Store at -20°C (regular) and -80°C (long term). Avoid freeze / thaw cycles. Buffer: PBS with 0.02% sodium azide, 50% glycerol, pH7.3.
Concentration:	lot specific
Purification:	Affinity purification
Conjugation:	Unconjugated
Storage:	Store at -20°C. Avoid freeze / thaw cycles.
Stability:	Stable for 12 months from date of receipt.
Predicted Protein Size:	56kDa
Gene Name:	recombination signal binding protein for immunoglobulin kappa J region
Database Link:	NP_005340 Entrez Gene 19664 Mouse Entrez Gene 679028 Rat Entrez Gene 3516 Human Q06330



[View online »](#)

Background:

The protein encoded by this gene is a transcriptional regulator important in the Notch signaling pathway. The encoded protein acts as a repressor when not bound to Notch proteins and an activator when bound to Notch proteins. It is thought to function by recruiting chromatin remodeling complexes containing histone deacetylase or histone acetylase proteins to Notch signaling pathway genes. Several transcript variants encoding different isoforms have been found for this gene, and several pseudogenes of this gene exist on chromosome 9.

Synonyms:

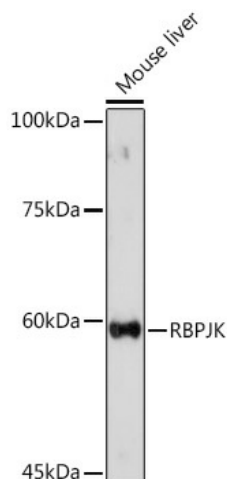
AOS3; CBF1; csl; IGKJRB; IGKJRB1; KBF2; RBP-J; RBPJK; RBPSUH; SUH

Protein Families:

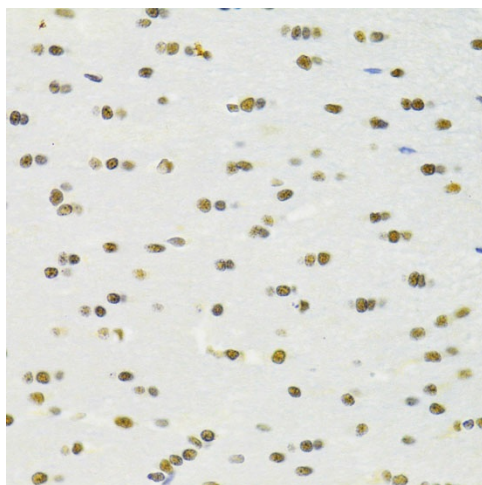
Transcription Factors

Protein Pathways:

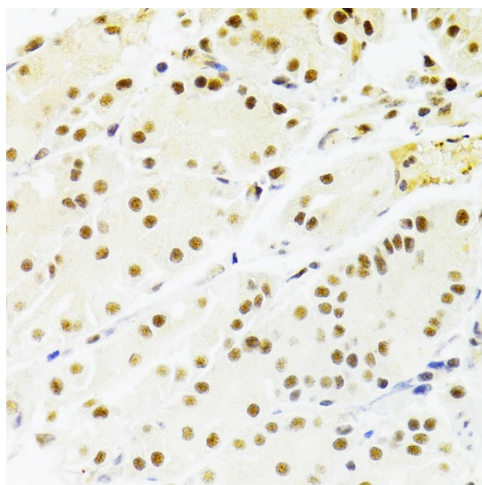
Notch signaling pathway

Product images:


Western blot analysis of lysates from Mouse liver



Immunohistochemistry analysis of paraffin-embedded Rat brain using RBPJK Rabbit pAb ([TA332834]) at dilution of 1:100 (40x lens). Microwave antigen retrieval performed with 0.01M PBS Buffer (pH 7.2) prior to IHC staining.



Immunohistochemistry analysis of paraffin-embedded Human stomach using RBPJK Rabbit pAb ([TA332834]) at dilution of 1:100 (40x lens). Microwave antigen retrieval performed with 0.01M PBS Buffer (pH 7.2) prior to IHC staining.