

Product datasheet for **TA332833S**

EVI1 (MECOM) Rabbit Polyclonal Antibody

Product data:

Product Type:	Primary Antibodies
Applications:	ELISA, WB
Recommended Dilution:	WB, 1:500 - 1:2000 ELISA, Recommended starting concentration is 1 µg/mL. Please optimize the concentration based on your specific assay requirements.
Reactivity:	Human, Rat
Host:	Rabbit
Isotype:	IgG
Clonality:	Polyclonal
Formulation:	Store at -20°C (regular) and -80°C (long term). Avoid freeze / thaw cycles. Buffer: PBS with 0.02% sodium azide, 50% glycerol, pH7.3.
Concentration:	lot specific
Purification:	Affinity purification
Conjugation:	Unconjugated
Storage:	Store at -20°C. Avoid freeze / thaw cycles.
Stability:	Stable for 12 months from date of receipt.
Predicted Protein Size:	18kDa/117kDa/118kDa/125kDa/139kDa
Gene Name:	MDS1 and EVI1 complex locus
Database Link:	NP_004982 Entrez Gene 294924 Rat Entrez Gene 2122 Human Q03112
Background:	The protein encoded by this gene is a transcriptional regulator and oncoprotein that may be involved in hematopoiesis, apoptosis, development, and cell differentiation and proliferation. The encoded protein can interact with CTBP1, SMAD3, CREBBP, KAT2B, MAPK8, and MAPK9. This gene can undergo translocation with the AML1 gene, resulting in overexpression of this gene and the onset of leukemia. Several transcript variants encoding a few different isoforms have been found for this gene.
Synonyms:	AML1-EVI-1; EVI1; MDS1; MDS1-EVI1; PRDM3

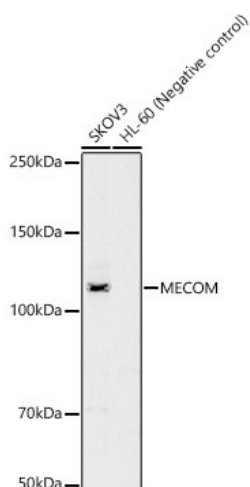


[View online »](#)

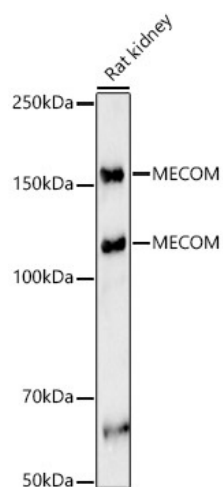
Protein Families: Druggable Genome, Transcription Factors

Protein Pathways: Chronic myeloid leukemia, MAPK signaling pathway, Pathways in cancer

Product images:



Western blot analysis of various lysates



Western blot analysis of lysates from Rat kidney