

## Product datasheet for **TA332833**

### **EVI1 (MECOM) Rabbit Polyclonal Antibody**

#### **Product data:**

Product Type:	Primary Antibodies
Applications:	WB
Recommended Dilution:	WB 1:500 - 1:2000
Reactivity:	Human, Rat
Host:	Rabbit
Isotype:	IgG
Clonality:	Polyclonal
Immunogen:	Recombinant protein of human MECOM
Formulation:	Store at -20°C (regular) and -80°C (long term). Avoid freeze / thaw cycles. Buffer: PBS with 0.02% sodium azide, 50% glycerol, pH7.3.
Concentration:	lot specific
Purification:	Affinity purification
Conjugation:	Unconjugated
Storage:	Store at -20°C as received.
Stability:	Stable for 12 months from date of receipt.
Predicted Protein Size:	1051
Gene Name:	MDS1 and EVI1 complex locus
Database Link:	<a href="#">NP_004982</a> <a href="#">Entrez Gene 294924 Rat</a> <a href="#">Entrez Gene 2122 Human</a> <a href="#">Q03112</a>
Background:	The protein encoded by this gene is a transcriptional regulator and oncoprotein that may be involved in hematopoiesis, apoptosis, development, and cell differentiation and proliferation. The encoded protein can interact with CTBP1, SMAD3, CREBBP, KAT2B, MAPK8, and MAPK9. This gene can undergo translocation with the AML1 gene, resulting in overexpression of this gene and the onset of leukemia. Several transcript variants encoding a few different isoforms have been found for this gene.
Synonyms:	AML1-EVI-1; EVI1; MDS1; MDS1-EVI1; PRDM3

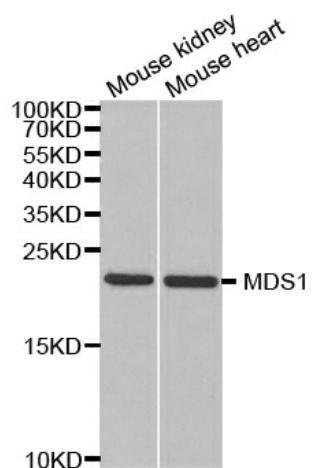


[View online »](#)

Protein Families: Druggable Genome, Transcription Factors

Protein Pathways: Chronic myeloid leukemia, MAPK signaling pathway, Pathways in cancer

### Product images:



Western blot analysis of extracts of various cell lines, using MECOM antibody.