

Product datasheet for **TA332805**

DDX3 (DDX3X) Rabbit Polyclonal Antibody

Product data:

Product Type:	Primary Antibodies
Applications:	ICC/IF, IHC, IP, WB
Recommended Dilution:	WB 1:500 - 1:2000;IF 1:50 - 1:200;IP 1:20 - 1:50
Reactivity:	Human, Mouse, Rat
Host:	Rabbit
Isotype:	IgG
Clonality:	Polyclonal
Immunogen:	Recombinant protein of human DDX3X
Formulation:	Store at -20°C (regular) and -80°C (long term). Avoid freeze / thaw cycles. Buffer: PBS with 0.02% sodium azide, 50% glycerol, pH7.3.
Concentration:	lot specific
Purification:	Affinity purification
Conjugation:	Unconjugated
Storage:	Store at -20°C as received.
Stability:	Stable for 12 months from date of receipt.
Predicted Protein Size:	73 kDa
Gene Name:	DEAD-box helicase 3, X-linked
Database Link:	NP_001347 Entrez Gene 13205 Mouse Entrez Gene 317335 Rat Entrez Gene 1654 Human O00571



[View online »](#)

Background:

DEAD box proteins, characterized by the conserved motif Asp-Glu-Ala-Asp (DEAD), are putative RNA helicases. They are implicated in a number of cellular processes involving alteration of RNA secondary structure such as translation initiation, nuclear and mitochondrial splicing, and ribosome and spliceosome assembly. Based on their distribution patterns, some members of this family are believed to be involved in embryogenesis, spermatogenesis, and cellular growth and division. This gene encodes a DEAD box protein, which interacts specifically with hepatitis C virus core protein resulting a change in intracellular location. This gene has a homolog located in the nonrecombining region of the Y chromosome. The protein sequence is 91% identical between this gene and the Y-linked homolog. Alternative splicing results in multiple transcript variants.

Synonyms:

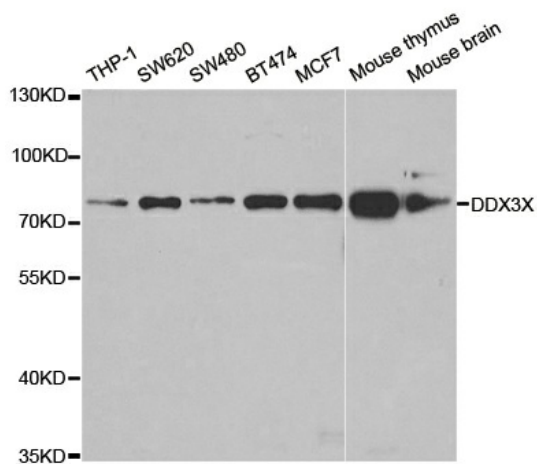
CAP-Rf; DBX; DDX3; DDX14; HLP2

Protein Families:

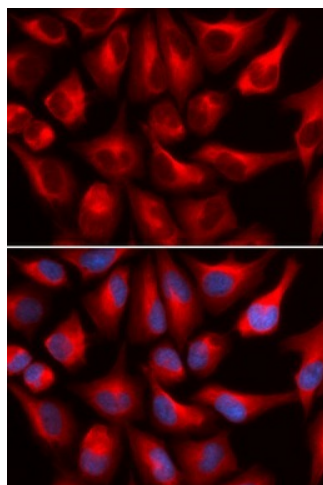
ES Cell Differentiation/IPS

Protein Pathways:

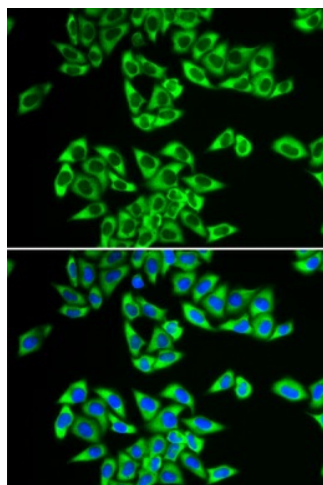
RIG-I-like receptor signaling pathway

Product images:

Western blot analysis of extracts of various cell lines, using DDX3X antibody.



Immunofluorescence analysis of U2OS cell using DDX3X antibody. Blue: DAPI for nuclear staining.



Immunofluorescence analysis of HeLa cell using DDX3X antibody. Blue: DAPI for nuclear staining.