

## Product datasheet for **TA332797S**

### GnRH (GNRH1) Rabbit Polyclonal Antibody

#### Product data:

Product Type:	Primary Antibodies
Applications:	ELISA, ICC/IF, WB
Recommended Dilution:	WB, 1:500 - 1:1000 IF/ICC, 1:50 - 1:200 ELISA, Recommended starting concentration is 1 µg/mL. Please optimize the concentration based on your specific assay requirements.
Reactivity:	Human, Mouse, Rat
Host:	Rabbit
Isotype:	IgG
Clonality:	Polyclonal
Formulation:	Store at -20°C (regular) and -80°C (long term). Avoid freeze / thaw cycles. Buffer: PBS with 0.02% sodium azide, 50% glycerol, pH7.3.
Concentration:	lot specific
Purification:	Affinity purification
Conjugation:	Unconjugated
Storage:	Store at -20°C. Avoid freeze / thaw cycles.
Stability:	Stable for 12 months from date of receipt.
Predicted Protein Size:	10kDa
Gene Name:	gonadotropin releasing hormone 1
Database Link:	<a href="#">NP_001076580</a> <a href="#">Entrez Gene 2796 Human</a> <a href="#">P01148</a>



[View online »](#)

**Background:**

This gene encodes a preproprotein that is proteolytically processed to generate a peptide that is a member of the gonadotropin-releasing hormone (GnRH) family of peptides. Alternative splicing results in multiple transcript variants, at least one of which is secreted and then cleaved to generate gonadoliberein-1 and GnRH-associated peptide 1. Gonadoliberein-1 stimulates the release of luteinizing and follicle stimulating hormones, which are important for reproduction. Mutations in this gene are associated with hypogonadotropic hypogonadism.

**Synonyms:**

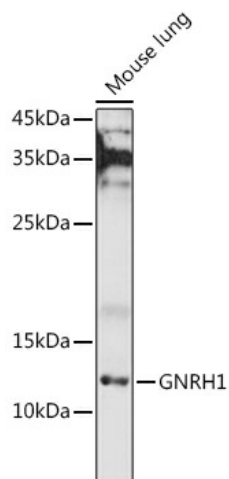
GNRH; GRH; HH12; LHRH; LNRH

**Protein Families:**

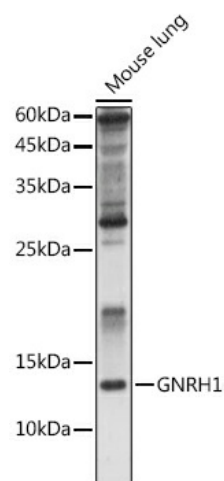
Druggable Genome, Secreted Protein

**Protein Pathways:**

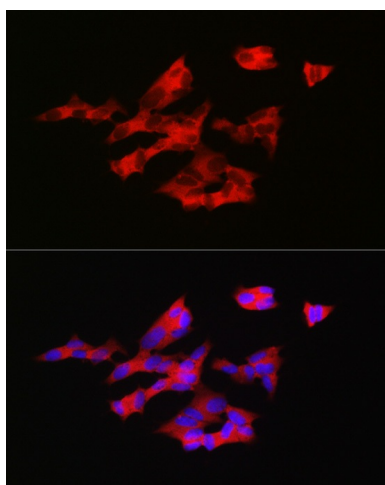
GnRH signaling pathway

**Product images:**


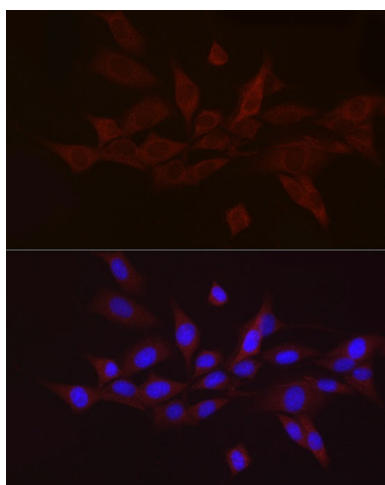
Western blot analysis of lysates from Mouse lung



Western blot analysis of lysates from Rat kidney



Immunofluorescence analysis of SH-SY5Y cells using GNRH1 Rabbit pAb ([TA332797]) at dilution of 1:200 (40x lens). Secondary antibody: Cy3-conjugated Goat anti-Rabbit IgG (H+L) (AS007) at 1:500 dilution. Blue: DAPI for nuclear staining.



Immunofluorescence analysis of NIH/3T3 cells using GNRH1 Rabbit pAb ([TA332797]) at dilution of 1:50 (40x lens). Secondary antibody: Cy3-conjugated Goat anti-Rabbit IgG (H+L) (AS007) at 1:500 dilution. Blue: DAPI for nuclear staining.