

Product datasheet for **TA332797**

GnRH (GNRH1) Rabbit Polyclonal Antibody

Product data:

Product Type:	Primary Antibodies
Applications:	ICC/IF, WB
Recommended Dilution:	WB 1:500 - 1:2000
Reactivity:	Human, Mouse, Rat
Host:	Rabbit
Isotype:	IgG
Clonality:	Polyclonal
Immunogen:	Recombinant protein of human GNRH1
Formulation:	Store at -20°C (regular) and -80°C (long term). Avoid freeze / thaw cycles. Buffer: PBS with 0.02% sodium azide, 50% glycerol, pH7.3.
Concentration:	lot specific
Purification:	Affinity purification
Conjugation:	Unconjugated
Storage:	Store at -20°C as received.
Stability:	Stable for 12 months from date of receipt.
Predicted Protein Size:	92
Gene Name:	gonadotropin releasing hormone 1
Database Link:	NP_001076580 Entrez Gene 2796 Human P01148
Background:	The protein encoded by this gene is secreted and then cleaved to form the 10 aa luteinizing hormone-releasing hormone (LHRH, also known as gonadoliberin-1), and prolactin release-inhibiting factor (also known as GnRH-associated peptide 1). LHRH stimulates the release of luteinizing and follicle stimulating hormones, which are important for reproduction. Mutation in this gene are associated with hypogonadotropic hypogonadism. Alternatively spliced transcript variants have been described for this gene.
Synonyms:	GNRH; GRH; HH12; LHRH; LNRH



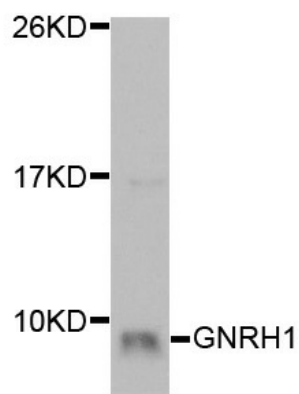
[View online »](#)

Protein Families: Druggable Genome, Secreted Protein

Protein Pathways: GnRH signaling pathway

Product images:

Recombinant Protein



Western blot analysis of extracts of Recombinant Protein cell line, using GNRH1 antibody.