

Product datasheet for **TA332794**

PGRMC1 Rabbit Polyclonal Antibody

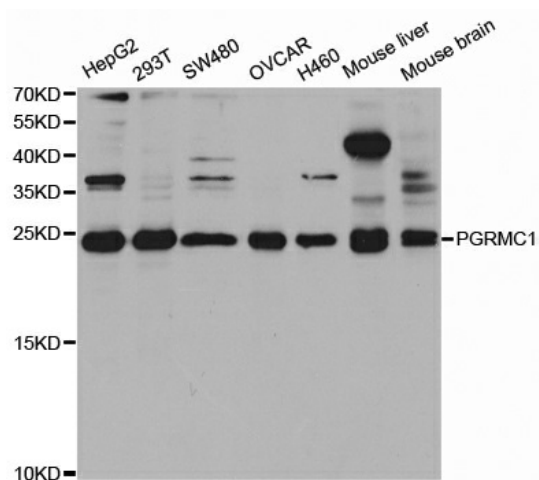
Product data:

Product Type:	Primary Antibodies
Applications:	WB
Recommended Dilution:	WB 1:500 - 1:2000
Reactivity:	Human, Mouse, Rat
Host:	Rabbit
Isotype:	IgG
Clonality:	Polyclonal
Immunogen:	Recombinant protein of human PGRMC1
Formulation:	Store at -20°C (regular) and -80°C (long term). Avoid freeze / thaw cycles. Buffer: PBS with 0.02% sodium azide, 50% glycerol, pH7.3.
Concentration:	lot specific
Purification:	Affinity purification
Conjugation:	Unconjugated
Storage:	Store at -20°C as received.
Stability:	Stable for 12 months from date of receipt.
Predicted Protein Size:	195
Gene Name:	progesterone receptor membrane component 1
Database Link:	NP_006658 Entrez Gene 53328 MouseEntrez Gene 291948 RatEntrez Gene 10857 Human O00264
Background:	This gene encodes a putative membrane-associated progesterone steroid receptor. The protein is expressed predominantly in the liver and kidney.
Synonyms:	HPR6.6; MPR
Protein Families:	Druggable Genome, Nuclear Hormone Receptor, Transmembrane



[View online »](#)

Product images:



Western blot analysis of extracts of various cell lines, using PGRMC1 antibody.