

Product datasheet for **TA332793**

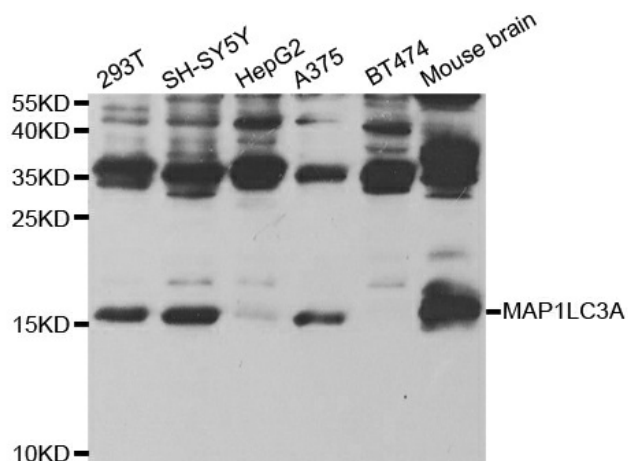
MAP1LC3A Rabbit Polyclonal Antibody

Product data:

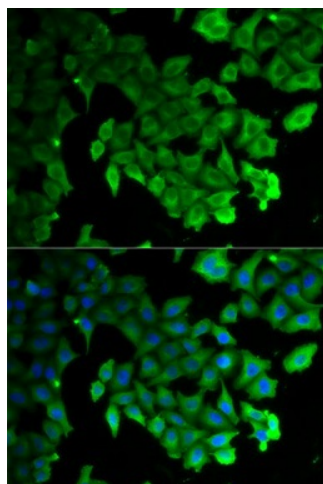
| | |
|-------------------------|---|
| Product Type: | Primary Antibodies |
| Applications: | ICC/IF, IHC, WB |
| Recommended Dilution: | WB 1:500 - 1:2000;IF 1:50- 1:200 |
| Reactivity: | Human, Mouse, Rat |
| Host: | Rabbit |
| Isotype: | IgG |
| Clonality: | Polyclonal |
| Immunogen: | Recombinant protein of human MAP1LC3A |
| Formulation: | Store at -20°C (regular) and -80°C (long term). Avoid freeze / thaw cycles. Buffer: PBS with 0.02% sodium azide, 50% glycerol, pH7.3. |
| Concentration: | lot specific |
| Purification: | Affinity purification |
| Conjugation: | Unconjugated |
| Storage: | Store at -20°C as received. |
| Stability: | Stable for 12 months from date of receipt. |
| Predicted Protein Size: | 121 |
| Gene Name: | microtubule associated protein 1 light chain 3 alpha |
| Database Link: | NP_115903 Entrez Gene 66734 MouseEntrez Gene 362245 RatEntrez Gene 84557 Human Q9H492 |
| Background: | MAP1A and MAP1B are microtubule-associated proteins which mediate the physical interactions between microtubules and components of the cytoskeleton. MAP1A and MAP1B each consist of a heavy chain subunit and multiple light chain subunits. The protein encoded by this gene is one of the light chain subunits and can associate with either MAP1A or MAP1B. Two transcript variants encoding different isoforms have been found for this gene. The expression of variant 1 is suppressed in many tumor cell lines, suggesting that may be involved in carcinogenesis. |
| Synonyms: | ATG8E; LC3; LC3A; MAP1ALC3; MAP1BLC3 |



[View online »](#)

Product images:

Western blot analysis of extracts of various cell lines, using MAP1LC3A antibody.



Immunofluorescence analysis of HeLa cell using MAP1LC3A antibody. Blue: DAPI for nuclear staining.