

Product datasheet for **TA332787S**

Thymidine Kinase 1 (TK1) Rabbit Polyclonal Antibody

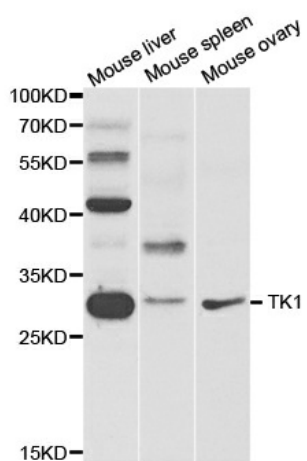
Product data:

| | |
|-------------------------|--|
| Product Type: | Primary Antibodies |
| Applications: | ICC/IF, IHC, WB |
| Recommended Dilution: | WB 1:500 - 1:2000;IF 1:50- 1:200 |
| Reactivity: | Human, Mouse, Rat |
| Host: | Rabbit |
| Isotype: | IgG |
| Clonality: | Polyclonal |
| Immunogen: | Recombinant protein of human TK1 |
| Formulation: | PBS with 0.09% Sodium azide,50% glycerol,pH7.3. |
| Concentration: | lot specific |
| Purification: | Affinity purification |
| Conjugation: | Unconjugated |
| Storage: | Store at -20°C as received. |
| Stability: | Stable for 12 months from date of receipt. |
| Predicted Protein Size: | 234 |
| Gene Name: | thymidine kinase 1 |
| Database Link: | NP_003249 Entrez Gene 21877 MouseEntrez Gene 24834 RatEntrez Gene 7083 Human P04183 |
| Synonyms: | TK2 |
| Protein Families: | Druggable Genome, Stem cell - Pluripotency |
| Protein Pathways: | Drug metabolism - other enzymes, Metabolic pathways, Pyrimidine metabolism |

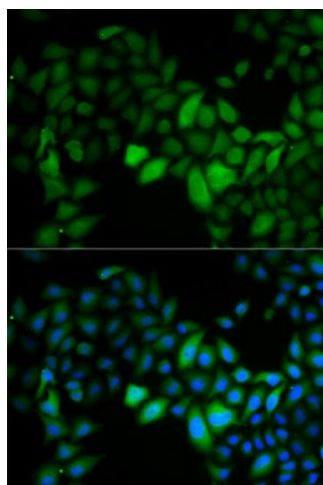


[View online »](#)

Product images:



Western blot analysis of extracts of various cell lines, using TK1 antibody.



Immunofluorescence analysis of HeLa cell using TK1 antibody. Blue: DAPI for nuclear staining.