

## Product datasheet for **TA332786**

### VEGF Receptor 2 (KDR) Rabbit Polyclonal Antibody

#### Product data:

Product Type:	Primary Antibodies
Applications:	WB
Recommended Dilution:	WB 1:500 - 1:2000
Reactivity:	Mouse, Human, Rat
Host:	Rabbit
Isotype:	IgG
Clonality:	Polyclonal
Immunogen:	A synthetic peptide of human VEGFR2
Formulation:	Store at 4°C (regular) and -20°C (long term). Avoid freeze / thaw cycles. Buffer: PBS with 0.02% sodium azide, 50% glycerol, pH7.3.
Concentration:	lot specific
Purification:	Affinity purification
Conjugation:	Unconjugated
Storage:	Store at -20°C as received.
Stability:	Stable for 12 months from date of receipt.
Predicted Protein Size:	210/230 kDa
Gene Name:	kinase insert domain receptor
Database Link:	<a href="#">NP_002244</a> <a href="#">Entrez Gene 16542 MouseEntrez Gene 25589 RatEntrez Gene 3791 Human P35968</a>
Background:	Vascular endothelial growth factor (VEGF) is a major growth factor for endothelial cells. This gene encodes one of the two receptors of the VEGF. This receptor, known as kinase insert domain receptor, is a type III receptor tyrosine kinase. It functions as the main mediator of VEGF-induced endothelial proliferation, survival, migration, tubular morphogenesis and sprouting. The signalling and trafficking of this receptor are regulated by multiple factors, including Rab GTPase, P2Y purine nucleotide receptor, integrin alphaVbeta3, T-cell protein tyrosine phosphatase, etc.. Mutations of this gene are implicated in infantile capillary hemangiomas.



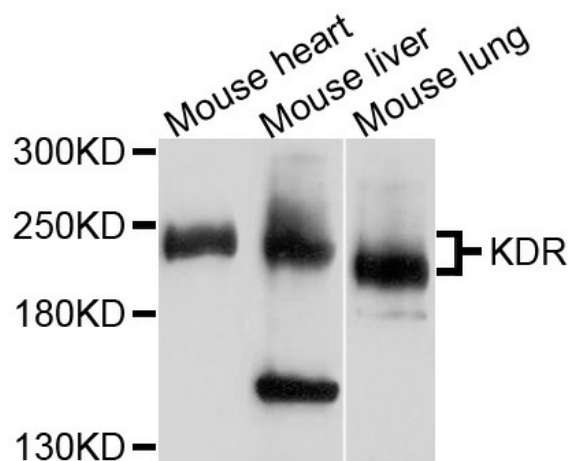
[View online »](#)

**Synonyms:** CD309; FLK1; VEGFR; VEGFR2

**Protein Families:** Druggable Genome, ES Cell Differentiation/IPS, Protein Kinase, Transmembrane

**Protein Pathways:** Cytokine-cytokine receptor interaction, Endocytosis, Focal adhesion, VEGF signaling pathway

**Product images:**



Western blot analysis of extracts of various cells, using KDR antibody.