

## Product datasheet for **TA332783S**

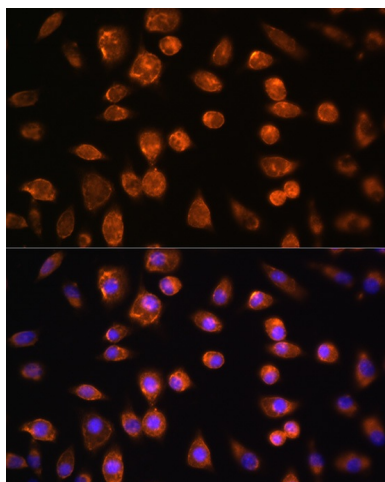
### FLT4 Rabbit Polyclonal Antibody

#### Product data:

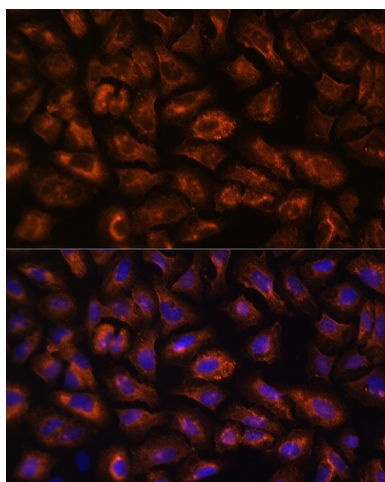
Product Type:	Primary Antibodies
Applications:	ICC/IF, IHC, WB
Recommended Dilution:	IF 1:20 - 1:50
Reactivity:	Mouse, Human, Rat
Host:	Rabbit
Isotype:	IgG
Clonality:	Polyclonal
Immunogen:	A synthetic peptide of human FLT4
Formulation:	Store at 4°C (regular) and -20°C (long term). Avoid freeze / thaw cycles. Buffer: PBS with 0.02% sodium azide, 50% glycerol, pH7.3.
Concentration:	lot specific
Purification:	Affinity purification
Conjugation:	Unconjugated
Storage:	Store at -20°C as received.
Stability:	Stable for 12 months from date of receipt.
Predicted Protein Size:	160 kDa
Gene Name:	fms related tyrosine kinase 4
Database Link:	<a href="#">NP_891555</a> <a href="#">Entrez Gene 14257 MouseEntrez Gene 114110 RatEntrez Gene 2324 Human P35916</a>
Background:	This gene encodes a tyrosine kinase receptor for vascular endothelial growth factors C and D. The protein is thought to be involved in lymphangiogenesis and maintenance of the lymphatic endothelium. Mutations in this gene cause hereditary lymphedema type IA.
Synonyms:	FLT-4; FLT41; LMPH1A; PCL; VEGFR-3; VEGFR3
Protein Families:	Druggable Genome, Protein Kinase, Transmembrane
Protein Pathways:	Cytokine-cytokine receptor interaction, Focal adhesion



[View online »](#)

**Product images:**

Immunofluorescence analysis of L929 cells using FLT4 Rabbit pAb ([TA332783]) at dilution of 1:100 (40x lens). Blue: DAPI for nuclear staining.



Immunofluorescence analysis of U-2 OS cells using FLT4 Rabbit pAb ([TA332783]) at dilution of 1:100 (40x lens). Blue: DAPI for nuclear staining.