

## Product datasheet for **TA332782**

### Hemopexin (HPX) Rabbit Polyclonal Antibody

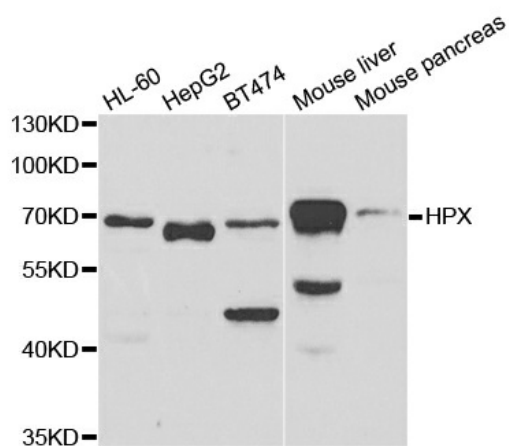
#### Product data:

Product Type:	Primary Antibodies
Applications:	WB
Recommended Dilution:	WB 1:500 - 1:2000
Reactivity:	Human, Mouse, Rat
Host:	Rabbit
Isotype:	IgG
Clonality:	Polyclonal
Immunogen:	Recombinant protein of human HPX
Formulation:	Store at -20°C (regular) and -80°C (long term). Avoid freeze / thaw cycles. Buffer: PBS with 0.02% sodium azide, 50% glycerol, pH7.3.
Concentration:	lot specific
Purification:	Affinity purification
Conjugation:	Unconjugated
Storage:	Store at -20°C as received.
Stability:	Stable for 12 months from date of receipt.
Predicted Protein Size:	51 kDa
Gene Name:	hemopexin
Database Link:	<a href="#">NP_000604</a> <a href="#">Entrez Gene 15458 MouseEntrez Gene 58917 RatEntrez Gene 3263 Human P02790</a>
Background:	This gene encodes a plasma glycoprotein that binds heme with high affinity. The encoded protein is an acute phase protein that transports heme from the plasma to the liver and may be involved in protecting cells from oxidative stress.
Synonyms:	HX
Protein Families:	Secreted Protein



[View online »](#)

## Product images:



Western blot analysis of extracts of various cell lines, using HPX antibody.