

Product datasheet for **TA332776**

MTREX Rabbit Polyclonal Antibody

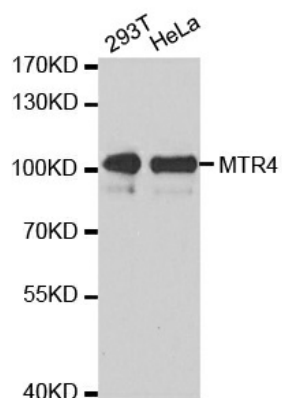
Product data:

Product Type:	Primary Antibodies
Applications:	IHC, IP, WB
Recommended Dilution:	WB 1:500 - 1:2000
Reactivity:	Human, Mouse, Rat
Host:	Rabbit
Isotype:	IgG
Clonality:	Polyclonal
Immunogen:	Recombinant protein of human MTR4
Formulation:	Store at -20°C (regular) and -80°C (long term). Avoid freeze / thaw cycles. Buffer: PBS with 0.02% sodium azide, 50% glycerol, pH7.3.
Concentration:	lot specific
Purification:	Affinity purification
Conjugation:	Unconjugated
Storage:	Store at -20°C as received.
Stability:	Stable for 12 months from date of receipt.
Predicted Protein Size:	1042
Gene Name:	Ski2 like RNA helicase 2
Database Link:	NP_056175 Entrez Gene 72198 Mouse Entrez Gene 365668 Rat Entrez Gene 23517 Human P42285
Synonyms:	Dob1; fSAP118; KIAA0052; Mtr4
Protein Pathways:	RNA degradation



[View online »](#)

Product images:



Western blot analysis of extracts of various cell lines, using MTR4 antibody.