

Product datasheet for **TA332766S**

Plastin L (LCP1) Rabbit Polyclonal Antibody

Product data:

Product Type:	Primary Antibodies
Applications:	ELISA, IP, WB
Recommended Dilution:	WB, 1:500 - 1:2000 IP, 0.5µg-4µg antibody for 200µg-400µg extracts of whole cells ELISA, Recommended starting concentration is 1 µg/mL. Please optimize the concentration based on your specific assay requirements.
Reactivity:	Human, Mouse
Host:	Rabbit
Isotype:	IgG
Clonality:	Polyclonal
Formulation:	Store at -20°C (regular) and -80°C (long term). Avoid freeze / thaw cycles. Buffer: PBS with 0.02% sodium azide, 50% glycerol, pH7.3.
Concentration:	lot specific
Purification:	Affinity purification
Conjugation:	Unconjugated
Storage:	Store at -20°C. Avoid freeze / thaw cycles.
Stability:	Stable for 12 months from date of receipt.
Predicted Protein Size:	70kDa
Gene Name:	lymphocyte cytosolic protein 1
Database Link:	NP_002289 Entrez Gene 18826 Mouse Entrez Gene 3936 Human P13796



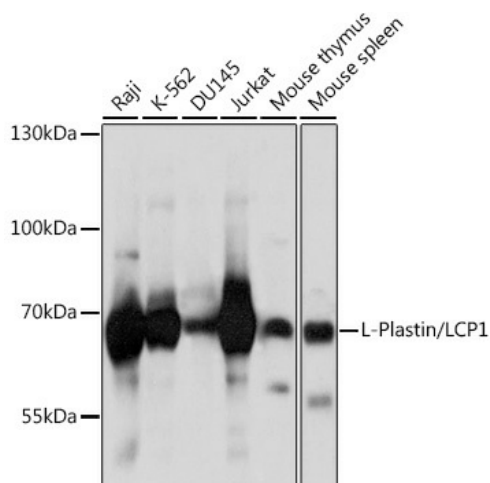
[View online »](#)

Background:

Plastins are a family of actin-binding proteins that are conserved throughout eukaryote evolution and expressed in most tissues of higher eukaryotes. In humans, two ubiquitous plastin isoforms (L and T) have been identified. Plastin 1 (otherwise known as Fimbrin) is a third distinct plastin isoform which is specifically expressed at high levels in the small intestine. The L isoform is expressed only in hemopoietic cell lineages, while the T isoform has been found in all other normal cells of solid tissues that have replicative potential (fibroblasts, endothelial cells, epithelial cells, melanocytes, etc.). However, L-plastin has been found in many types of malignant human cells of non-hemopoietic origin suggesting that its expression is induced accompanying tumorigenesis in solid tissues.

Synonyms:

CP64; HEL-S-37; L-PLASTIN; LC64P; LPL; PLS2

Product images:


Western blot analysis of various lysates using L-Plastin/LCP1 Rabbit pAb (TA332766) at 1:1000 dilution.

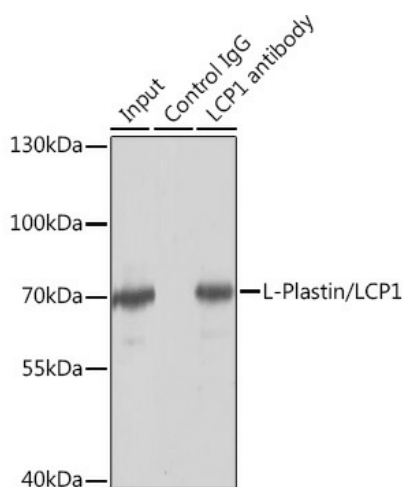
Secondary antibody: HRP-conjugated Goat anti-Rabbit IgG (H+L) (AS014) at 1:10000 dilution.

Lysates/proteins: 25µg per lane.

Blocking buffer: 3% nonfat dry milk in TBST.

Detection: ECL Basic Kit (RM00020).

Exposure time: 5s.



Immunoprecipitation analysis of 150 µg extracts of Jurkat cells using 3 µg L-Plastin/LCP1 antibody (TA332766). Western blot was performed from the immunoprecipitate using L-Plastin/LCP1 antibody (TA332766) at a dilution of 1:1000.