

Product datasheet for **TA332761S**

MCM5 Rabbit Polyclonal Antibody

Product data:

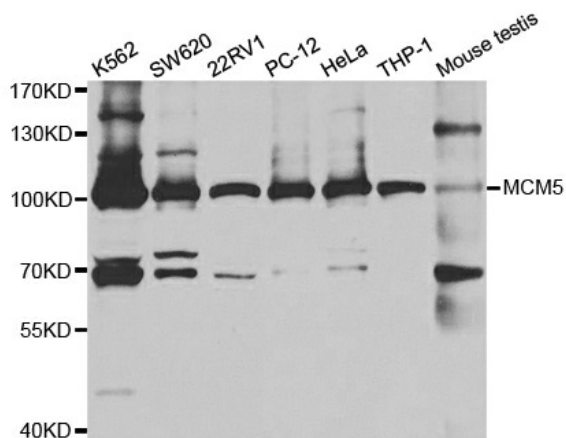
Product Type:	Primary Antibodies
Applications:	ICC/IF, IP, WB
Recommended Dilution:	WB 1:500 - 1:2000;IF 1:50 - 1:200;IP 1:20 - 1:50
Reactivity:	Human, Mouse, Rat
Host:	Rabbit
Isotype:	IgG
Clonality:	Polyclonal
Immunogen:	Recombinant protein of human MCM5
Formulation:	Store at -20°C (regular) and -80°C (long term). Avoid freeze / thaw cycles. Buffer: PBS with 0.02% sodium azide, 50% glycerol, pH7.3.
Concentration:	lot specific
Purification:	Affinity purification
Conjugation:	Unconjugated
Storage:	Store at -20°C as received.
Stability:	Stable for 12 months from date of receipt.
Predicted Protein Size:	82 kDa
Gene Name:	minichromosome maintenance complex component 5
Database Link:	NP_006730 Entrez Gene 17218 MouseEntrez Gene 291885 RatEntrez Gene 4174 Human P33992
Background:	The protein encoded by this gene is structurally very similar to the CDC46 protein from <i>S. cerevisiae</i> , a protein involved in the initiation of DNA replication. The encoded protein is a member of the MCM family of chromatin-binding proteins and can interact with at least two other members of this family. The encoded protein is upregulated in the transition from the G0 to G1/S phase of the cell cycle and may actively participate in cell cycle regulation.
Synonyms:	CDC46; P1-CDC46
Protein Families:	Stem cell - Pluripotency, Transcription Factors



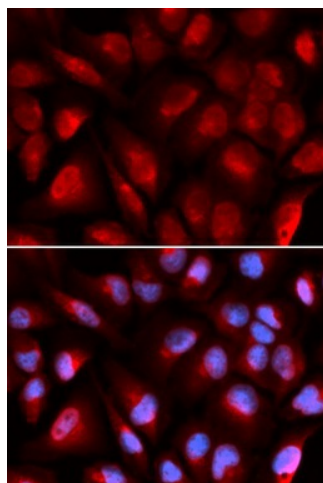
[View online »](#)

Protein Pathways: Cell cycle, DNA replication

Product images:



Western blot analysis of extracts of various cell lines, using MCM5 antibody.



Immunofluorescence analysis of U2OS cell using MCM5 antibody. Blue: DAPI for nuclear staining.