

Product datasheet for **TA332751**

SNAIL (SNAI1) Rabbit Polyclonal Antibody

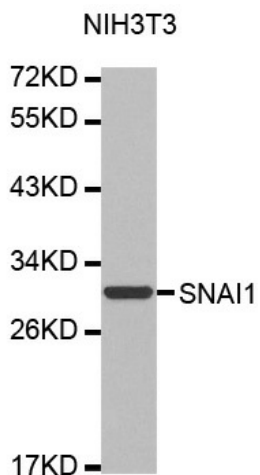
Product data:

Product Type:	Primary Antibodies
Applications:	IHC, WB
Recommended Dilution:	WB 1:500 - 1:2000
Reactivity:	Human, Mouse, Rat
Host:	Rabbit
Isotype:	IgG
Clonality:	Polyclonal
Immunogen:	Recombinant protein of human Snail
Formulation:	Store at -20°C (regular) and -80°C (long term). Avoid freeze / thaw cycles. Buffer: PBS with 0.02% sodium azide, 50% glycerol, pH7.3.
Concentration:	lot specific
Purification:	Affinity purification
Conjugation:	Unconjugated
Storage:	Store at -20°C as received.
Stability:	Stable for 12 months from date of receipt.
Gene Name:	snail family transcriptional repressor 1
Database Link:	NP_005976 Entrez Gene 20613 Mouse Entrez Gene 116490 Rat Entrez Gene 6615 Human O95863
Background:	The Drosophila embryonic protein snail is a zinc finger transcriptional repressor which downregulates the expression of ectodermal genes within the mesoderm. The nuclear protein encoded by this gene is structurally similar to the Drosophila snail protein, and is also thought to be critical for mesoderm formation in the developing embryo. At least two variants of a similar processed pseudogene have been found on chromosome 2.
Synonyms:	dj710H13.1; SLUGH2; SNA; SNAH; SNAIL; SNAIL1
Protein Families:	Druggable Genome
Protein Pathways:	Adherens junction



[View online »](#)

Product images:



Western blot analysis of extracts of NIH3T3 cell line, using Snail antibody.