

Product datasheet for **TA332750**

PRDM14 Rabbit Polyclonal Antibody

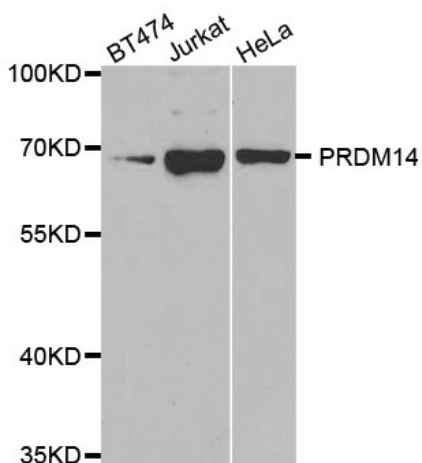
Product data:

Product Type:	Primary Antibodies
Applications:	ChIP, IHC, IP, WB
Recommended Dilution:	WB 1:500 - 1:2000;IP 1:20 - 1:100
Reactivity:	Human, Mouse, Rat
Host:	Rabbit
Isotype:	IgG
Clonality:	Polyclonal
Immunogen:	Recombinant protein of human PRDM14
Formulation:	Store at -20°C (regular) and -80°C (long term). Avoid freeze / thaw cycles. Buffer: PBS with 0.02% sodium azide, 50% glycerol, pH7.3.
Concentration:	lot specific
Purification:	Affinity purification
Conjugation:	Unconjugated
Storage:	Store at -20°C as received.
Stability:	Stable for 12 months from date of receipt.
Predicted Protein Size:	571
Gene Name:	PR domain 14
Database Link:	NP_078780 Entrez Gene 383491 MouseEntrez Gene 100365184 RatEntrez Gene 63978 Human Q9GZV8
Background:	This gene encodes a member of the PRDI-BF1 and RIZ homology domain containing (PRDM) family of transcriptional regulators. The encoded protein may possess histone methyltransferase activity and plays a critical role in cell pluripotency by suppressing the expression of differentiation marker genes. Expression of this gene may play a role in breast cancer.
Synonyms:	PFM11
Protein Families:	Transcription Factors

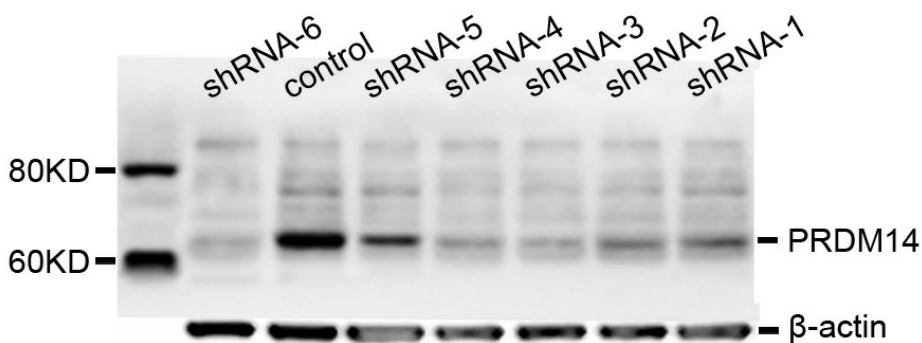


[View online »](#)

Product images:



Western blot analysis of extracts of various cell lines, using PRDM14 antibody.



Western blot analysis of various groups from PA-1 cell line, using PRDM14 antibody. ShRNA-1, shRNA-2, shRNA-3, shRNA-4, shRNA-5, shRNA-6 show knock-down samples which are transfected by different shRNAs targeting PRDM14. Control represents the untreated o