

## Product datasheet for **TA332749S**

### Calcitonin (CALCA) Rabbit Polyclonal Antibody

#### Product data:

Product Type:	Primary Antibodies
Applications:	ELISA, ICC/IF, IHC, WB
Recommended Dilution:	WB, 1:1000 - 1:5000 IHC-P, 1:2000 - 1:7000 IF/ICC, 1:50 - 1:200 ELISA, Recommended starting concentration is 1 µg/mL. Please optimize the concentration based on your specific assay requirements.
Reactivity:	Human, Mouse, Rat
Host:	Rabbit
Isotype:	IgG
Clonality:	Polyclonal
Formulation:	Store at -20°C (regular) and -80°C (long term). Avoid freeze / thaw cycles. Buffer: PBS with 0.02% sodium azide, 50% glycerol, pH7.3.
Concentration:	lot specific
Purification:	Affinity purification
Conjugation:	Unconjugated
Storage:	Store at -20°C. Avoid freeze / thaw cycles.
Stability:	Stable for 12 months from date of receipt.
Predicted Protein Size:	13kDa/15kDa
Gene Name:	calcitonin related polypeptide alpha
Database Link:	<a href="#">NP_001732</a> <a href="#">Entrez Gene 12310 Mouse</a> <a href="#">Entrez Gene 24241 Rat</a> <a href="#">Entrez Gene 796 Human</a> <a href="#">P06881</a>



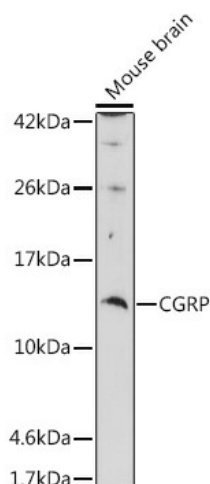
[View online »](#)

**Background:** This gene encodes the peptide hormones calcitonin, calcitonin gene-related peptide and katelectin by tissue-specific alternative RNA splicing of the gene transcripts and cleavage of inactive precursor proteins. Calcitonin is involved in calcium regulation and acts to regulate phosphorus metabolism. Calcitonin gene-related peptide functions as a vasodilator and as an antimicrobial peptide while katelectin is a calcium-lowering peptide. Multiple transcript variants encoding different isoforms have been found for this gene.

**Synonyms:** CALC1; CGRP; CGRP-I; CGRP1; CT; KC; PCT

**Protein Families:** Druggable Genome, Secreted Protein

## Product images:



Western blot analysis of lysates from wild type (WT) and 293T cells transfected with CGRP using CGRP Rabbit pAb ([TA332749]) at 1:2000 dilution.

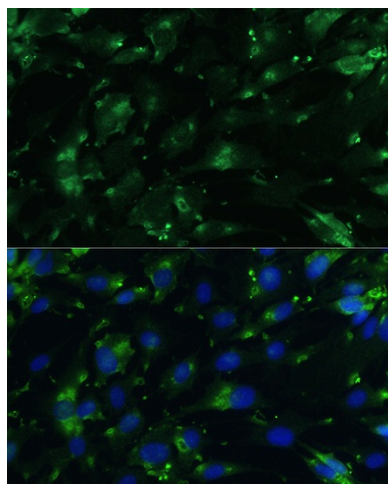
Secondary antibody: HRP-conjugated Goat anti-Rabbit IgG (H+L) (AS014) at 1:10000 dilution.

Lysates/proteins: 25 µg per lane.

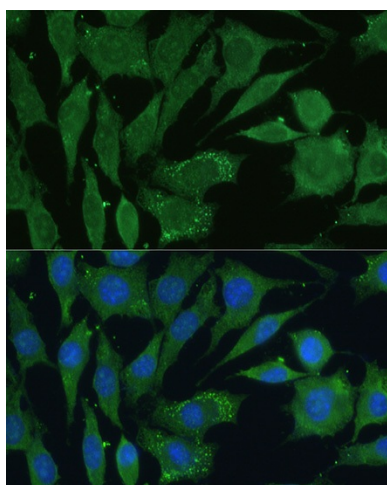
Blocking buffer: 3% nonfat dry milk in TBST.

Detection: ECL Basic Kit (RM00020).

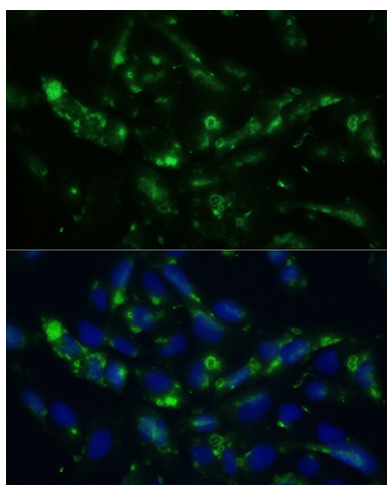
Exposure time: 1s.



Immunohistochemistry analysis of paraffin-embedded Human thyroid medullary carcinoma tissue using CGRP Rabbit pAb ([TA332749]) at a dilution of 1:6000 (40x lens). High pressure antigen retrieval performed with 0.01M Tris-EDTA Buffer(pH 9.0) prior to IHC staining.



Immunofluorescence analysis of C6 cells using CGRP Rabbit pAb ([TA332749]) at dilution of 1:100. Blue: DAPI for nuclear staining.



Immunofluorescence analysis of L929 cells using CGRP Rabbit pAb ([TA332749]) at dilution of 1:100. Blue: DAPI for nuclear staining.