

## Product datasheet for **TA332749**

### Calcitonin (CALCA) Rabbit Polyclonal Antibody

#### Product data:

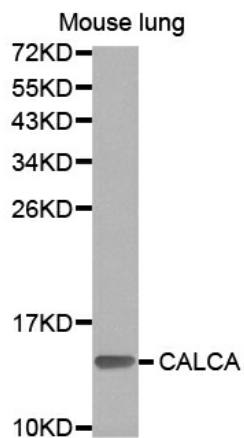
Product Type:	Primary Antibodies
Applications:	ICC/IF, WB
Recommended Dilution:	WB 1:500 - 1:2000
Reactivity:	Human, Mouse, Rat
Host:	Rabbit
Isotype:	IgG
Clonality:	Polyclonal
Immunogen:	Recombinant protein of human CALCA
Formulation:	Store at -20°C (regular) and -80°C (long term). Avoid freeze / thaw cycles. Buffer: PBS with 0.02% sodium azide, 50% glycerol, pH7.3.
Concentration:	lot specific
Purification:	Affinity purification
Conjugation:	Unconjugated
Storage:	Store at -20°C as received.
Stability:	Stable for 12 months from date of receipt.
Predicted Protein Size:	128
Gene Name:	calcitonin related polypeptide alpha
Database Link:	<a href="#">NP_001732</a> <a href="#">Entrez Gene 12310 MouseEntrez Gene 24241 RatEntrez Gene 796 Human P06881</a>
Background:	This gene encodes the peptide hormones calcitonin, calcitonin gene-related peptide and katelectin by tissue-specific alternative RNA splicing of the gene transcripts and cleavage of inactive precursor proteins. Calcitonin is involved in calcium regulation and acts to regulate phosphorus metabolism. Calcitonin gene-related peptide functions as a vasodilator while katelectin is a calcium-lowering peptide. Multiple transcript variants encoding different isoforms have been found for this gene.
Synonyms:	CALC1; CGRP; CGRP-I; CGRP1; CT; KC; PCT



[View online »](#)

Protein Families: Druggable Genome, Secreted Protein

### Product images:



Western blot analysis of extracts of mouse lung, using CALCA antibody.