

Product datasheet for **TA332746**

CDC25A Rabbit Polyclonal Antibody

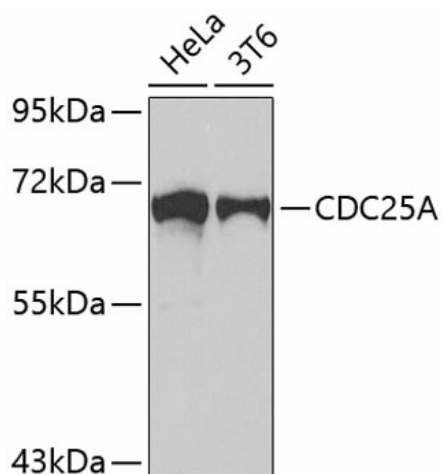
Product data:

Product Type:	Primary Antibodies
Applications:	WB
Recommended Dilution:	WB 1:500 - 1:1000
Reactivity:	Human, Mouse, Rat
Host:	Rabbit
Isotype:	IgG
Clonality:	Polyclonal
Immunogen:	A synthetic peptide of human CDC25A
Formulation:	Store at -20°C (regular) and -80°C (long term). Avoid freeze / thaw cycles. Buffer: PBS with 0.02% sodium azide, 50% glycerol, pH7.3.
Concentration:	lot specific
Purification:	Affinity purification
Conjugation:	Unconjugated
Storage:	Store at -20°C as received.
Stability:	Stable for 12 months from date of receipt.
Predicted Protein Size:	524
Gene Name:	cell division cycle 25A
Database Link:	NP_001780 Entrez Gene 12530 MouseEntrez Gene 171102 RatEntrez Gene 993 Human P30304
Background:	Tyrosine protein phosphatase which functions as a dosage-dependent inducer of mitotic progression. Directly dephosphorylates CDC2 and stimulates its kinase activity. Also dephosphorylates CDK2 in complex with cyclin E, in vitro.
Synonyms:	CDC25A2
Protein Families:	Druggable Genome, Phosphatase
Protein Pathways:	Cell cycle, Progesterone-mediated oocyte maturation



[View online »](#)

Product images:



Western blot analysis of extracts of various cell lines, using CDC25A antibody (TA332746). | Secondary antibody: HRP Goat Anti-Rabbit IgG (H+L) at 1:10000 dilution. | Lysates/proteins: 25ug per lane. | Blocking buffer: 3% nonfat dry milk in TBST.