

Product datasheet for **TA332731**

CTSA Rabbit Polyclonal Antibody

Product data:

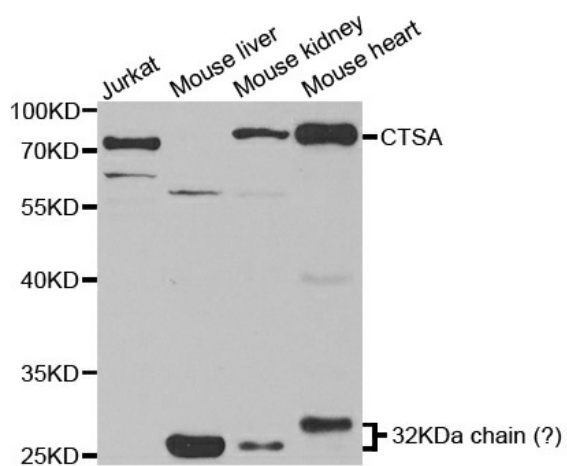
Product Type:	Primary Antibodies
Applications:	WB
Recommended Dilution:	WB 1:500 - 1:2000
Reactivity:	Human, Mouse, Rat
Host:	Rabbit
Isotype:	IgG
Clonality:	Polyclonal
Immunogen:	Recombinant protein of human CTSA
Formulation:	Store at -20°C (regular) and -80°C (long term). Avoid freeze / thaw cycles. Buffer: PBS with 0.02% sodium azide, 50% glycerol, pH7.3.
Concentration:	lot specific
Purification:	Affinity purification
Conjugation:	Unconjugated
Storage:	Store at -20°C as received.
Stability:	Stable for 12 months from date of receipt.
Predicted Protein Size:	54 kDa
Gene Name:	cathepsin A
Database Link:	NP_000299 Entrez Gene 19025 MouseEntrez Gene 296370 RatEntrez Gene 5476 Human P10619
Background:	This gene encodes a glycoprotein which associates with lysosomal enzymes beta-galactosidase and neuraminidase to form a complex of high molecular weight multimers. The formation of this complex provides a protective role for stability and activity. Deficiencies in this gene are linked to multiple forms of galactosialidosis. Alternatively spliced transcript variants encoding different isoforms have been found for this gene.
Synonyms:	GLB2; GSL; NGBE; PPCA; PPGB
Protein Families:	Druggable Genome, Protease



[View online »](#)

Protein Pathways: Renin-angiotensin system

Product images:



Western blot analysis of extracts of various cell lines, using CTSA antibody.